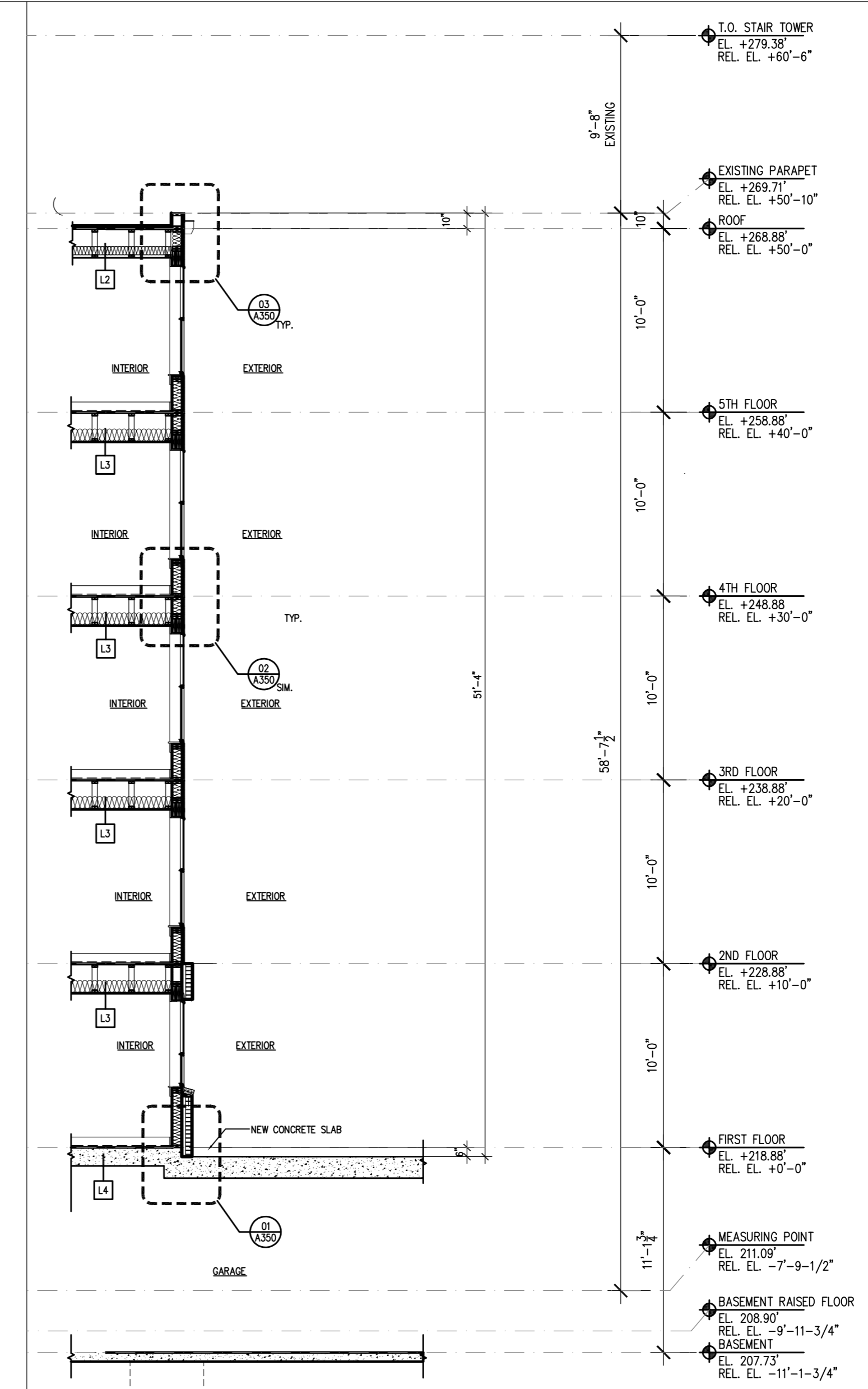


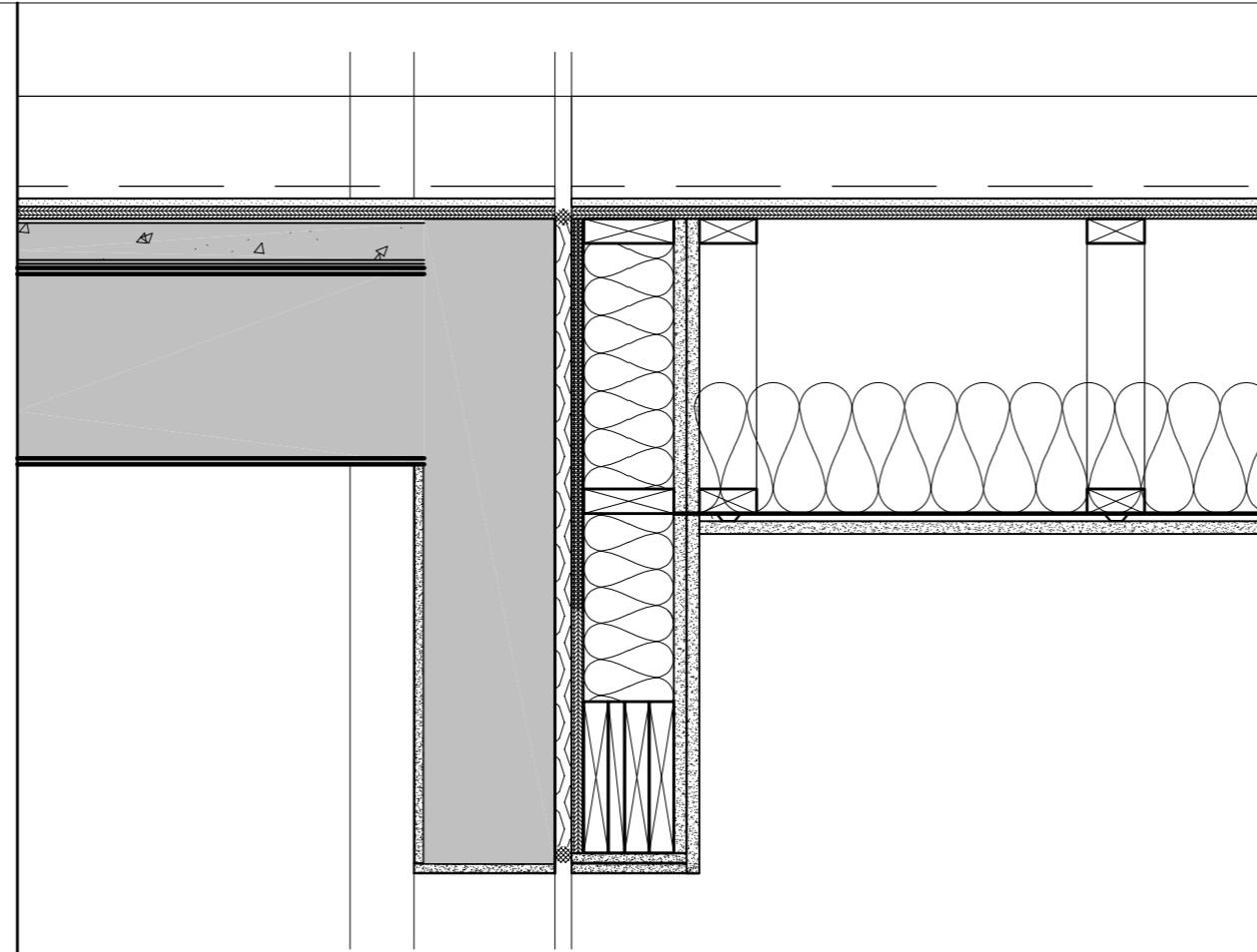
01 BUILDING SECTION
 A300 SCALE: 1/8" = 1'-0"

BUILDING SECTION

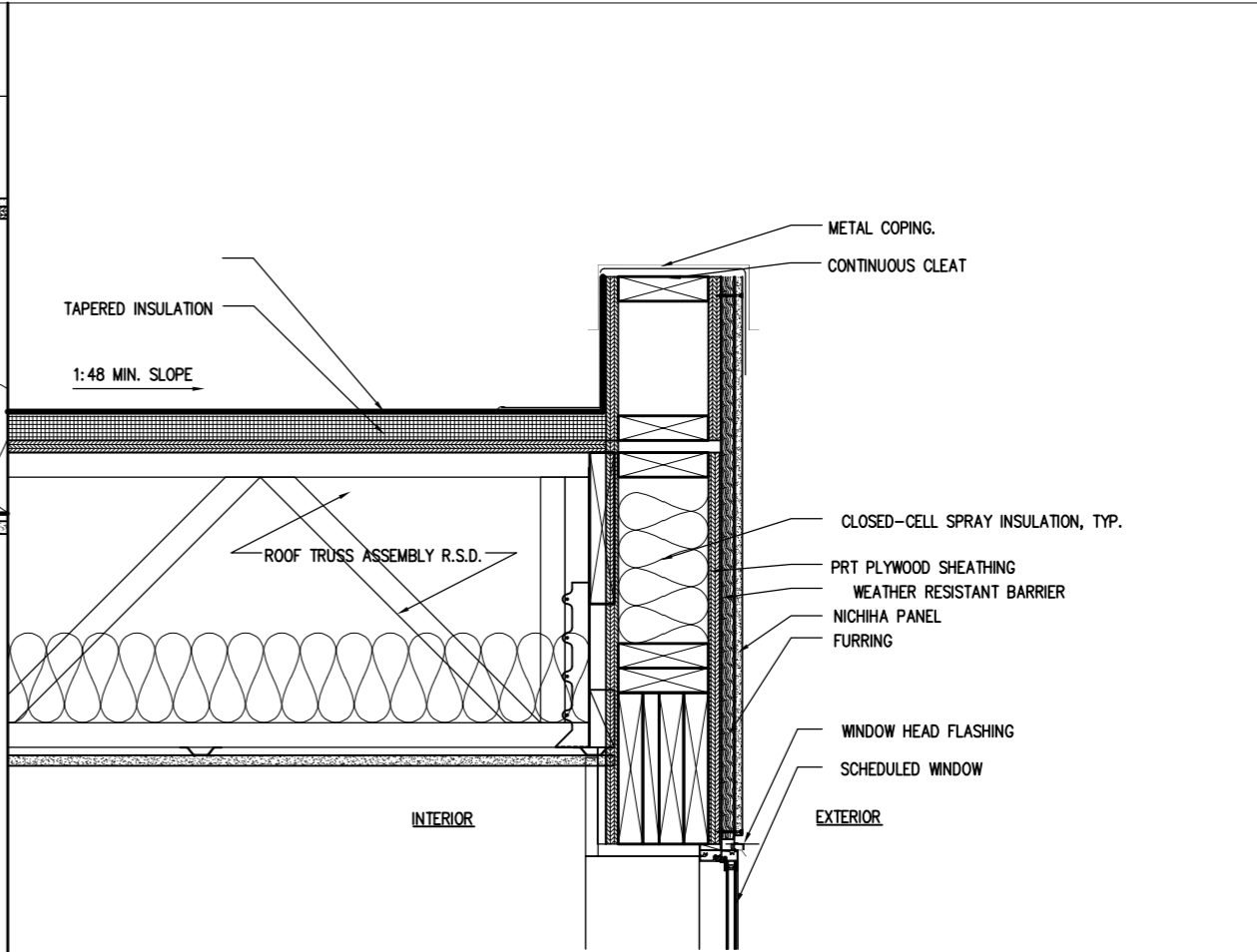


01 WALL SECTION
A320 SCALE: 1/4" = 1'-0"

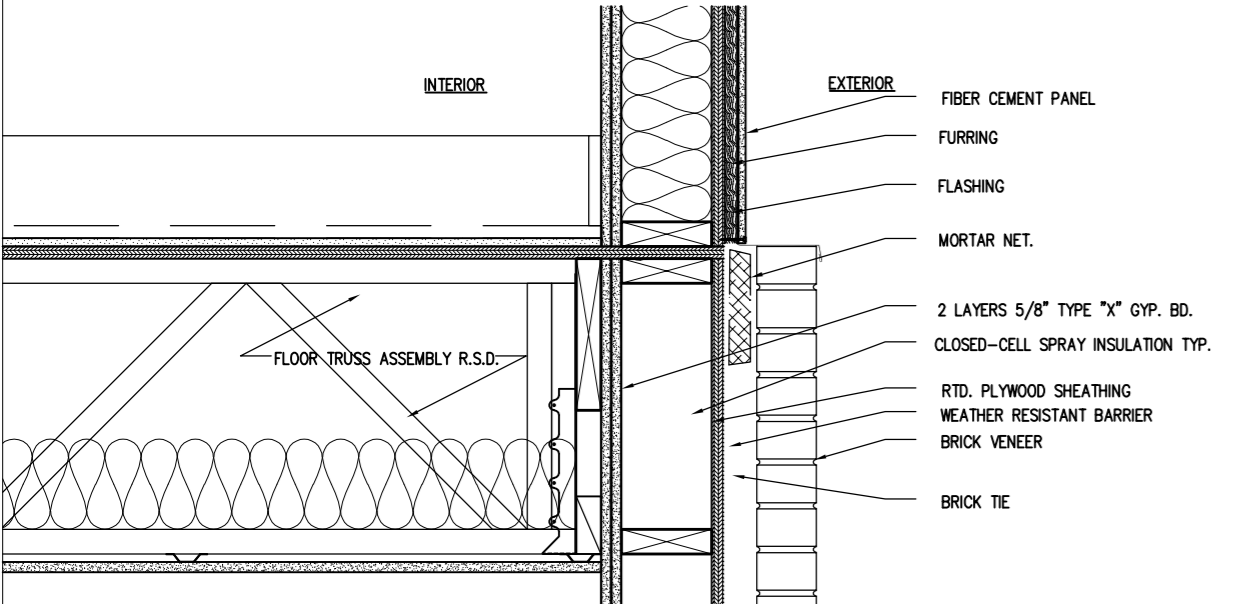
WALL SECTIONS



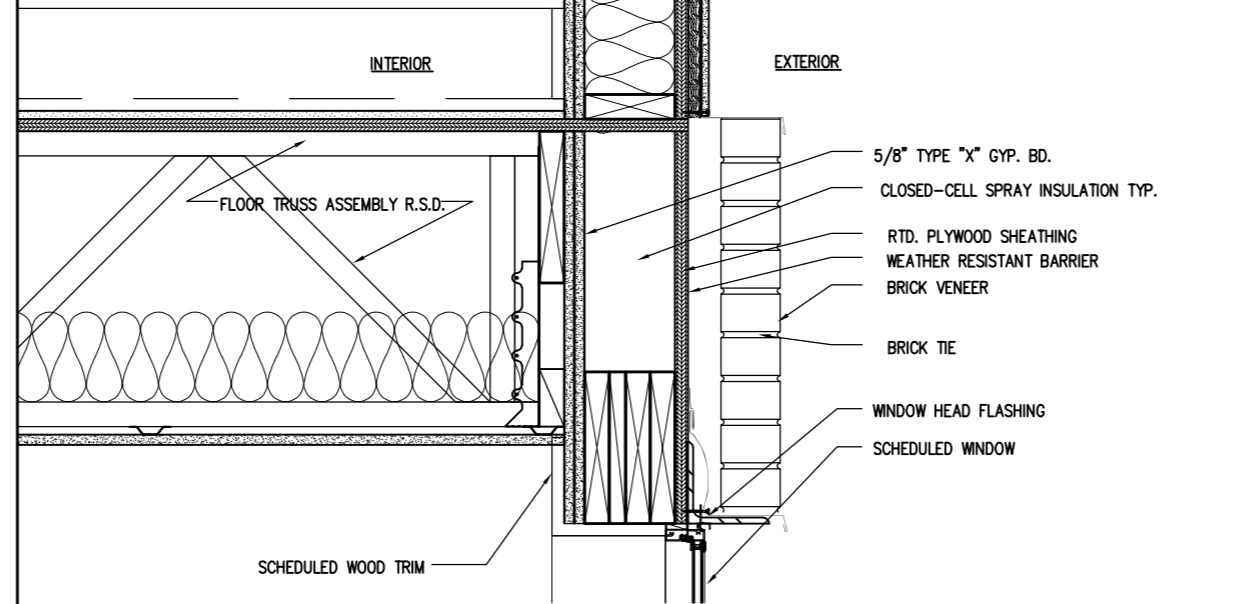
06 WALL SECTION DETAIL
A350 SCALE: 1-1/2" = 1'-0"



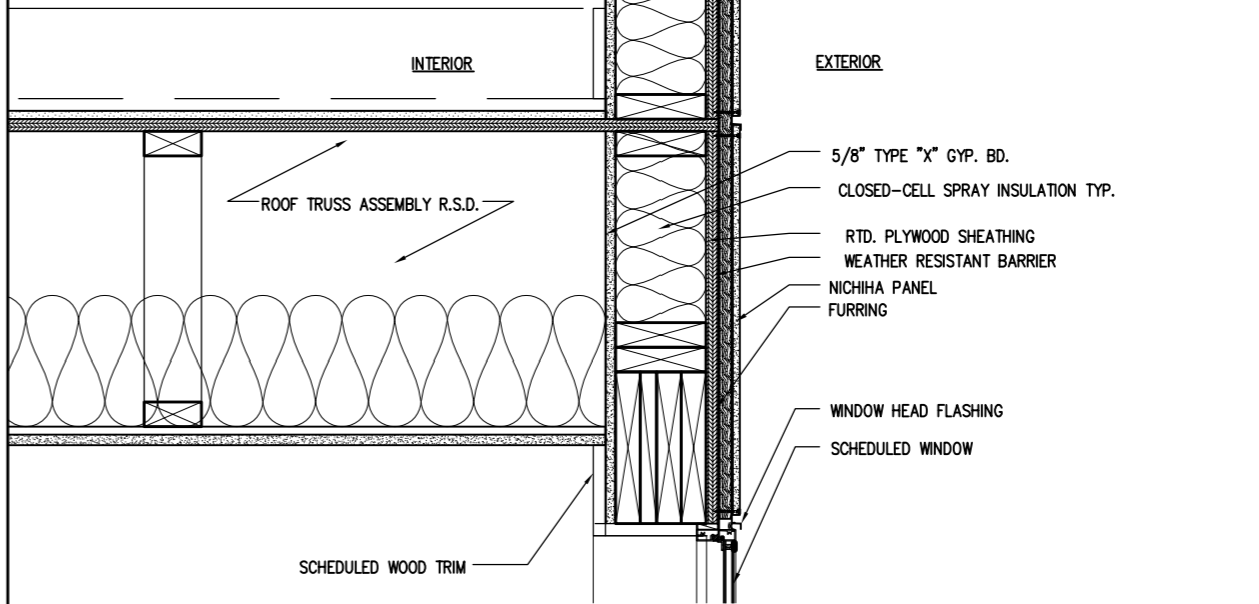
03 WALL SECTION DETAIL
A350 SCALE: 1-1/2" = 1'-0"



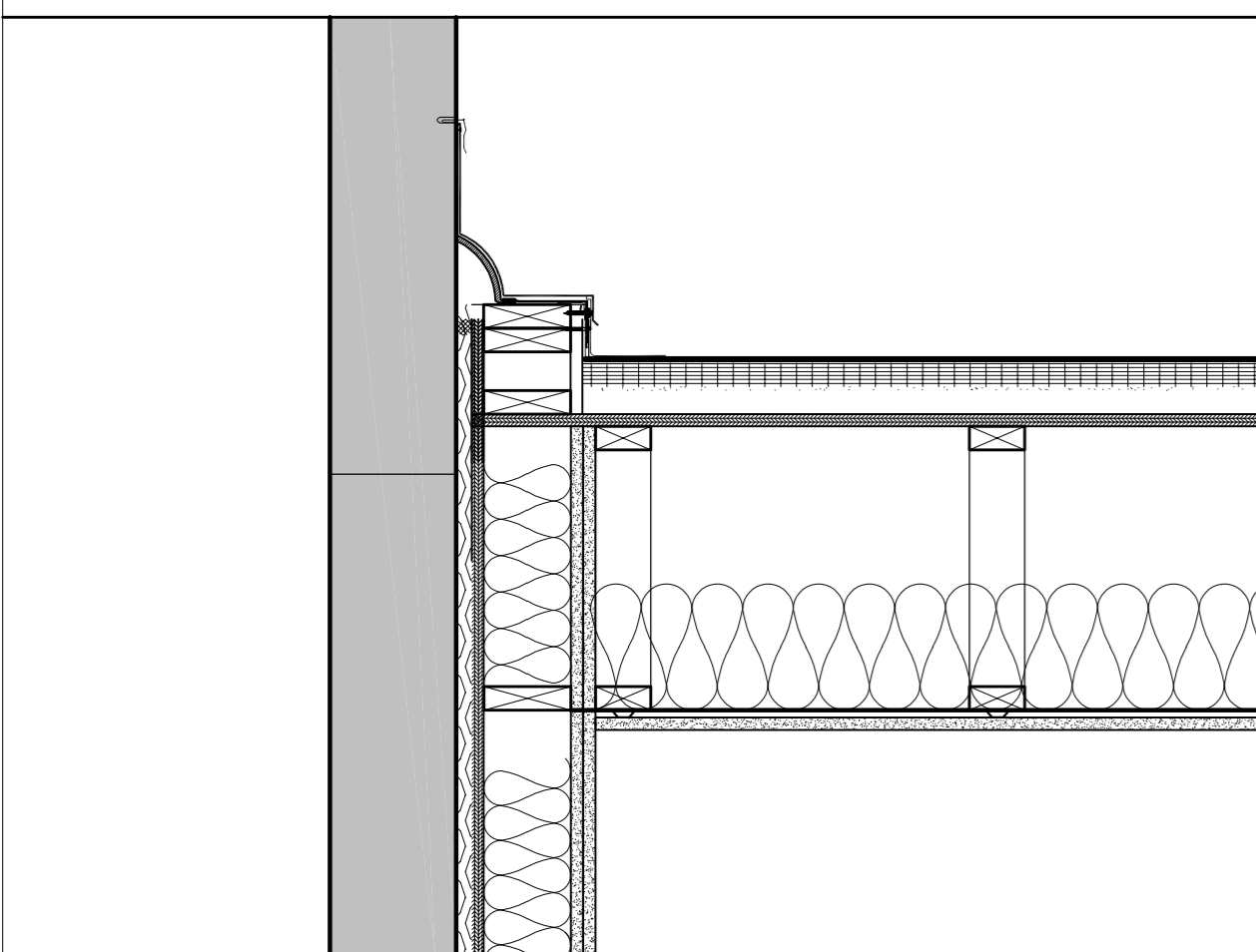
08 WALL SECTION DETAIL
A350 SCALE: 1-1/2" = 1'-0"



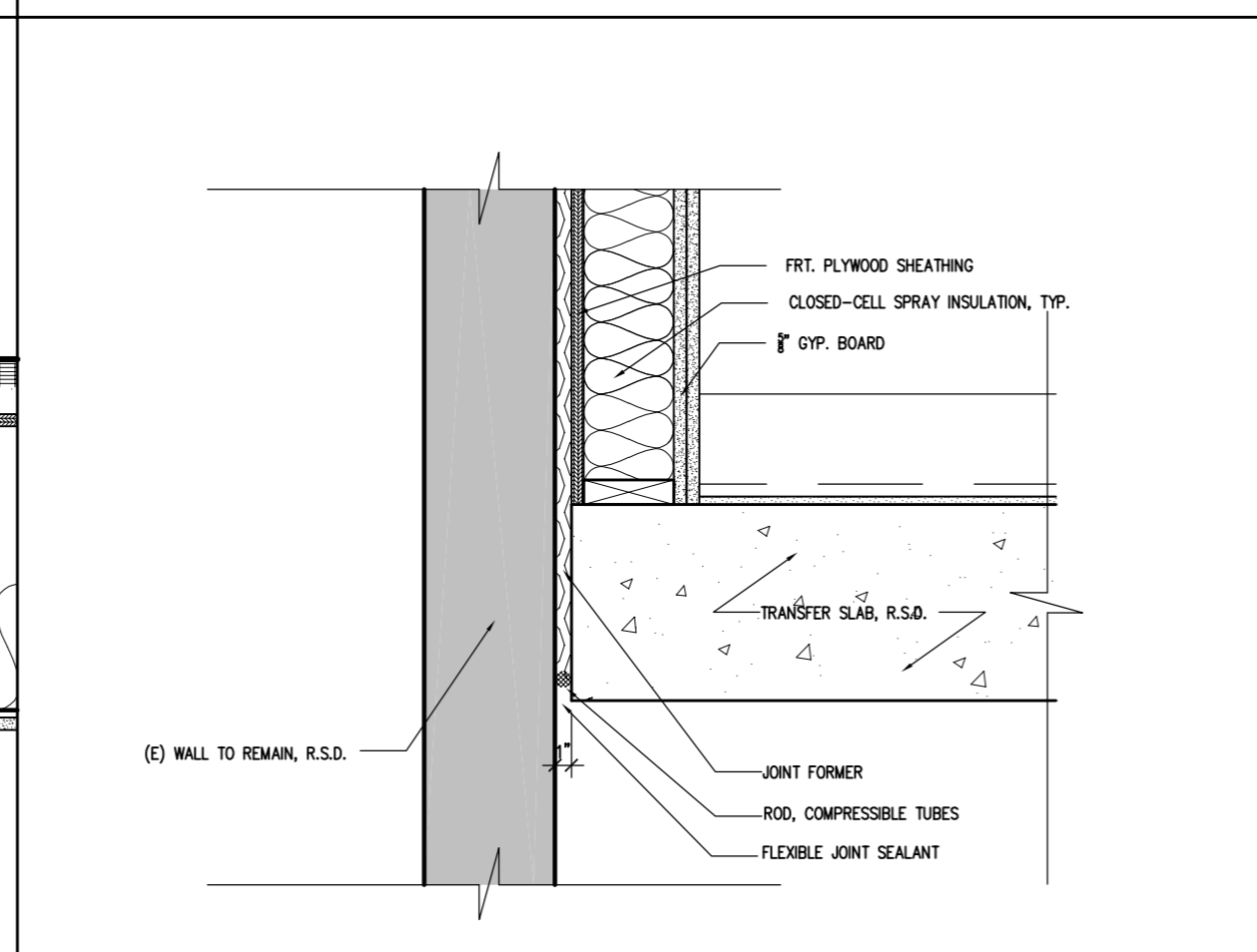
05 WALL SECTION DETAIL
A350 SCALE: 1-1/2" = 1'-0"



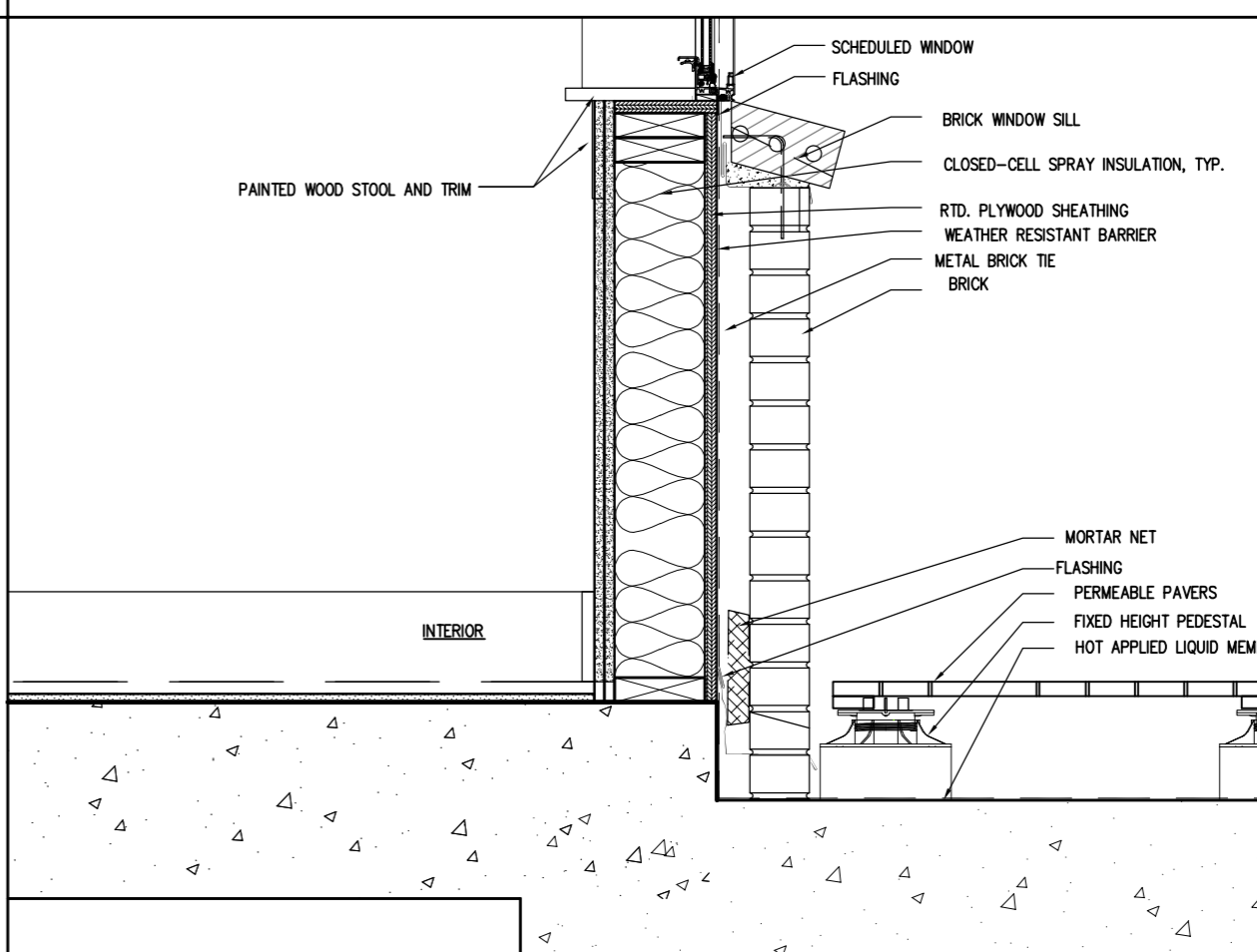
02 WALL SECTION DETAIL
A350 SCALE: 1-1/2" = 1'-0"



07 WALL SECTION DETAIL
A350 SCALE: 1-1/2" = 1'-0"

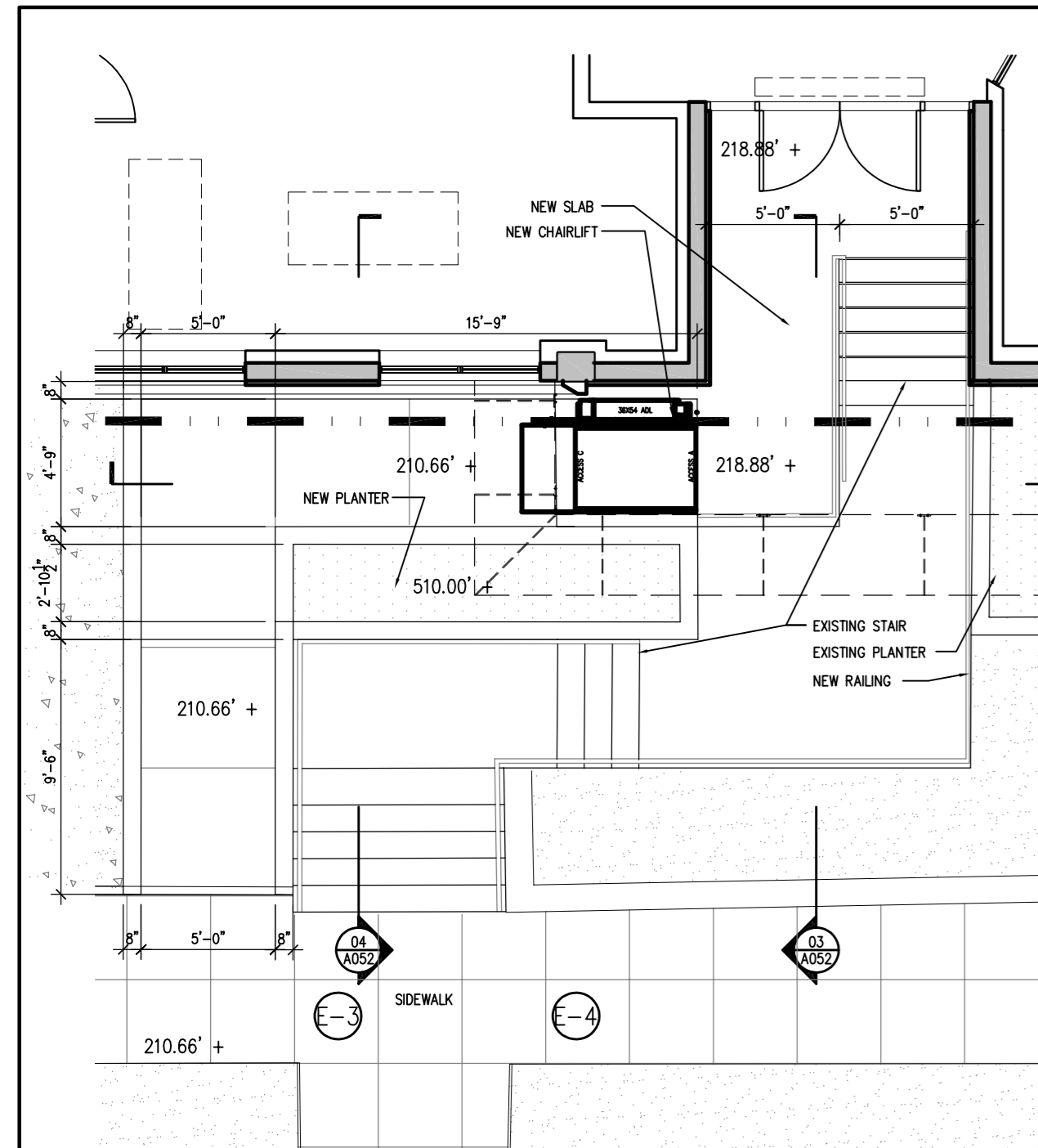


04 WALL SECTION DETAIL
A350 SCALE: 1-1/2" = 1'-0"



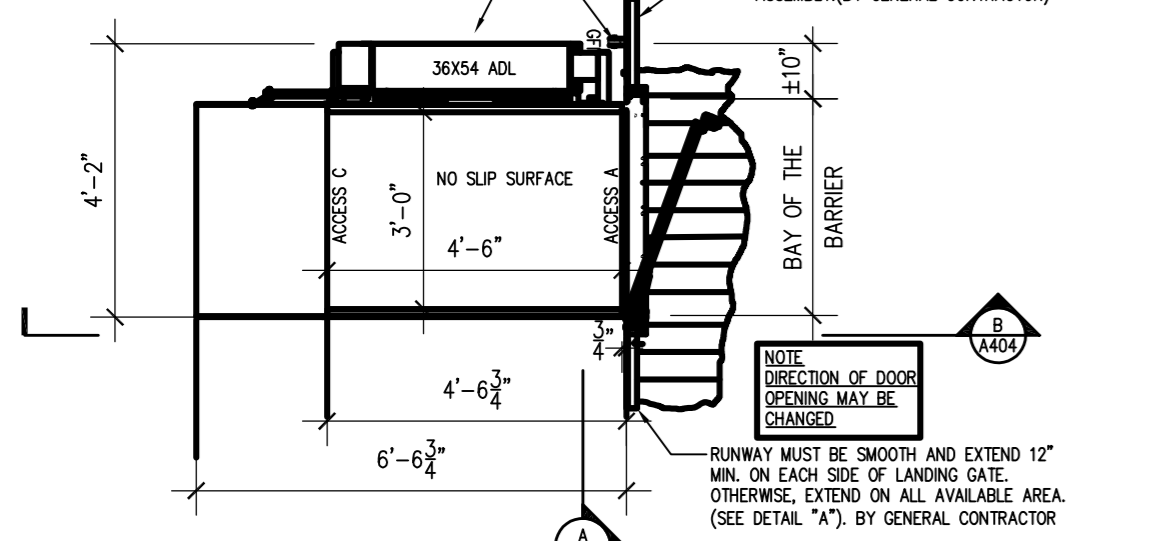
01 WALL SECTION DETAIL
A350 SCALE: 1-1/2" = 1'-0"

WALL SECTION DETAILS



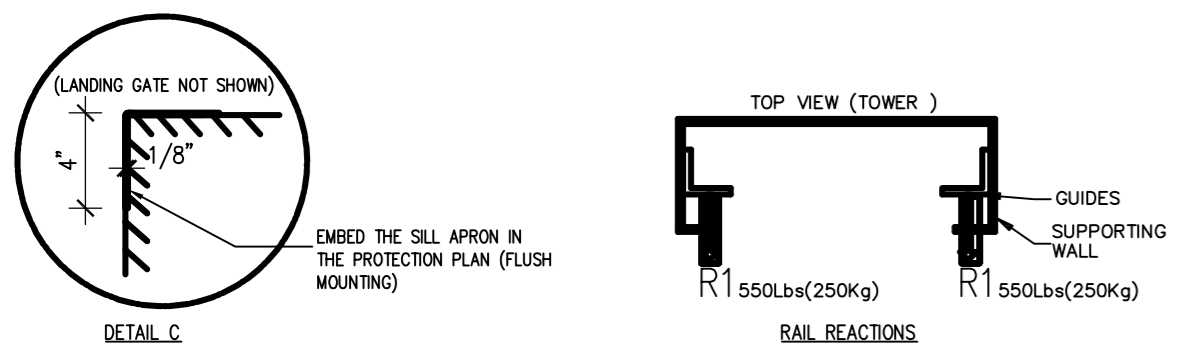
01 CHAIR LIFT KEY PLAN
SCALE: 1/4" = 1'-0"

1. PROVIDE ONE GFI 120VAC 15A OUTLET CLOSE TO THE BACK OF TOWER ONLY IF A MIN 24" ACCESS WAY IS AVAILABLE, OTHERWISE COORDINATE WITH LIFT INSTALLER
2. PROVIDE ALSO ONE WIRE AT THE SAME PLACE 120VAC, 15A
3. ENSURE AN ADEQUATE LIGHTING FOR THE VEHICLE AND THE LANDING (BY ELECTRICIAN)

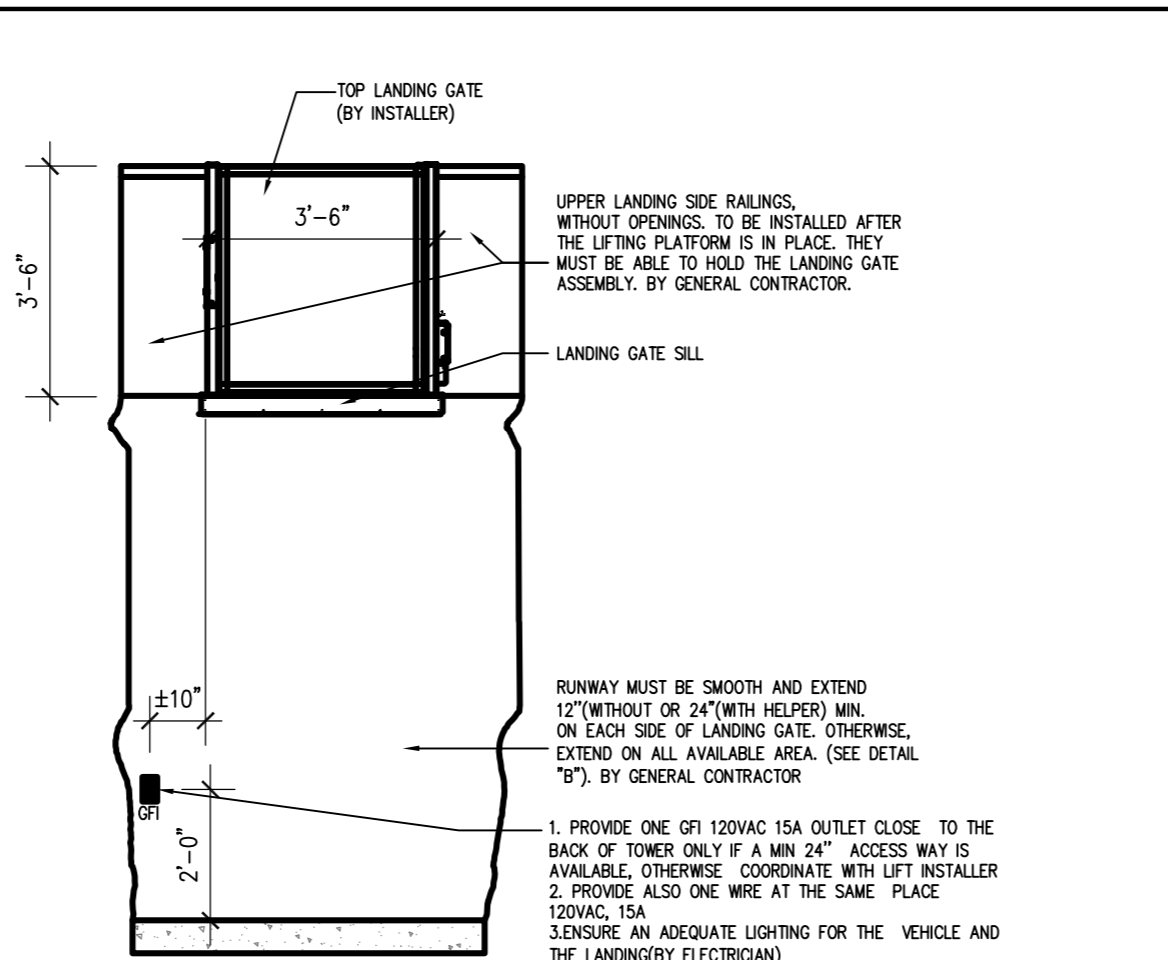


- NOTE
1. PROVIDE 100 Lx MIN. LIGHTING TO THE WHOLE PLATFORM (BY ELECTRICIAN).
 2. ANY WALL LOCATED LESS THAN 12" (WITHOUT HELPER) OR 24" (WITH HELPER) AWAY FROM THE CAB MUST EXCEED THE UPPER LANDING HEIGHT BY AT LEAST 42". IT MUST BE SMOOTH (NO RECESSES OR PROTRUSIONS).

02 ADL DECK LIFT (34"X54" PLATFORM SIZE)
SCALE: 1/2" = 1'-0"

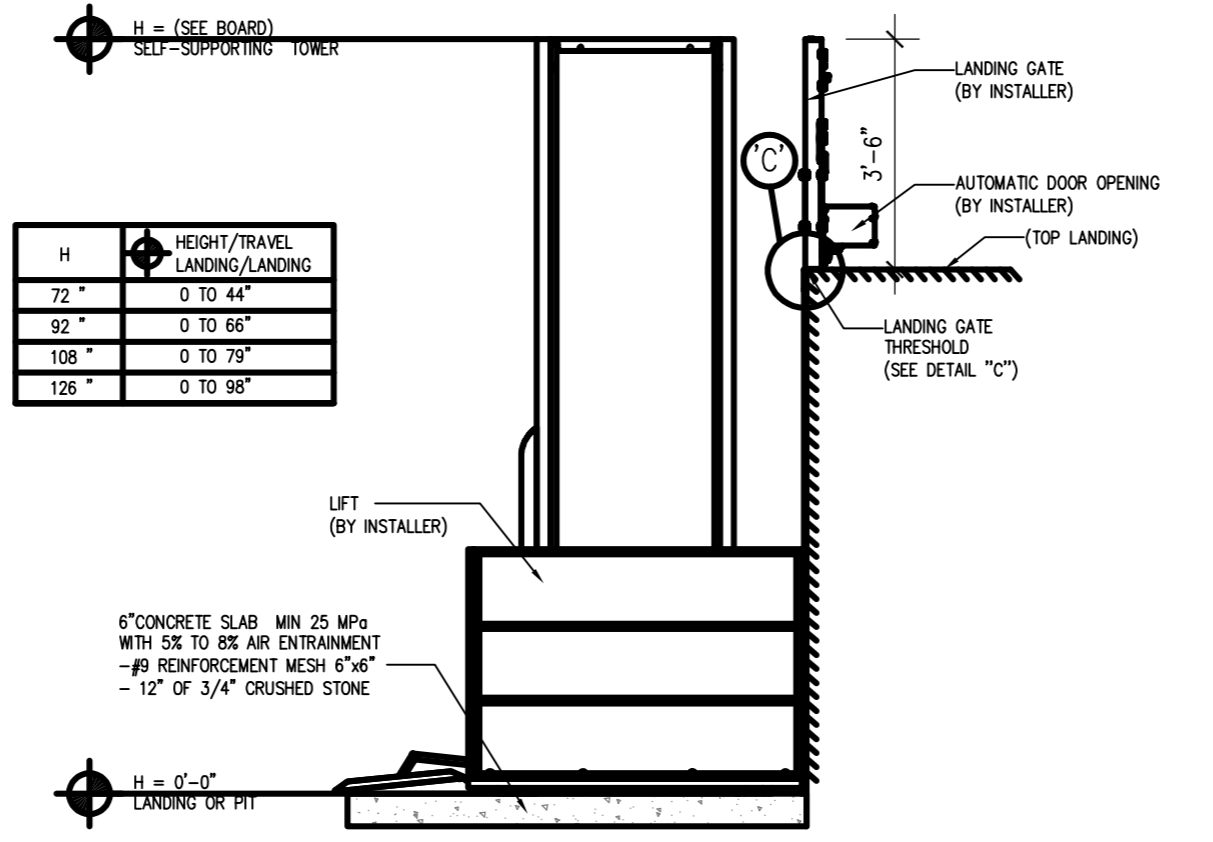


03 CHAIR LIFT KEY PLAN (continued)
SCALE: 1" = 1'-0"

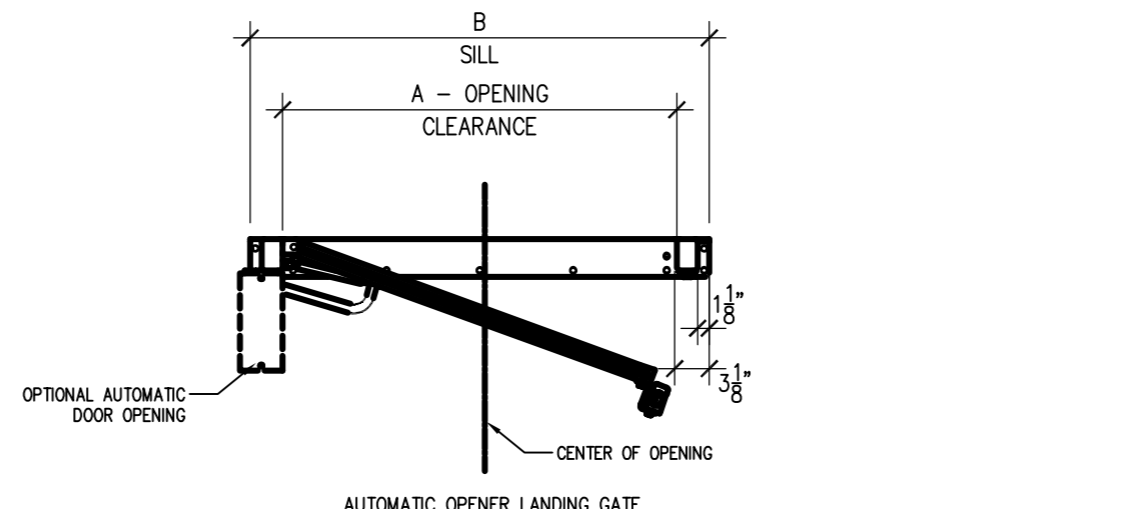


- NOTE
1. LIFT NOT SHOWN, IN ORDER TO CLARIFY THE DRAWING.

04 DETAIL A (SIDE VIEW)
SCALE: 1/2" = 1'-0"

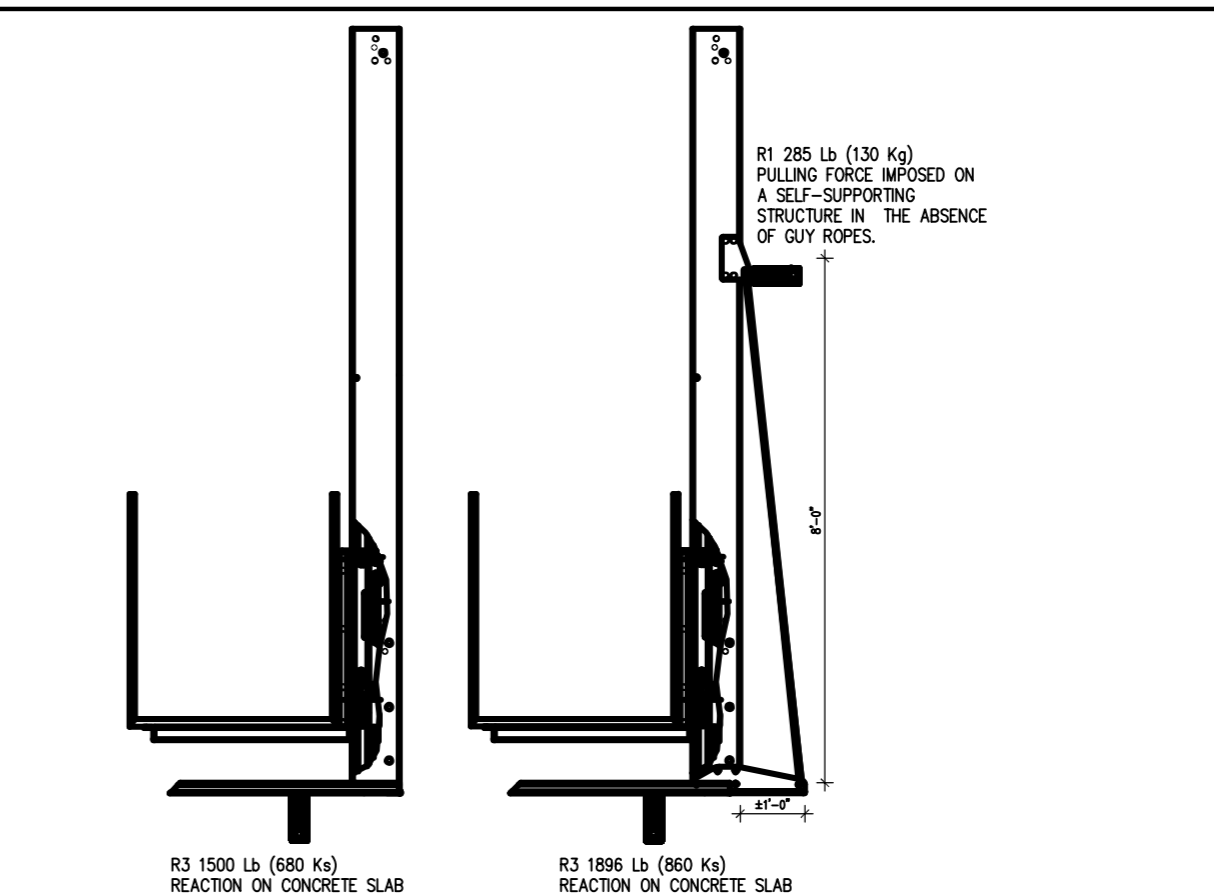


05 DETAIL B (FLOOR ELEVATION)
SCALE: 1/2" = 1'-0"

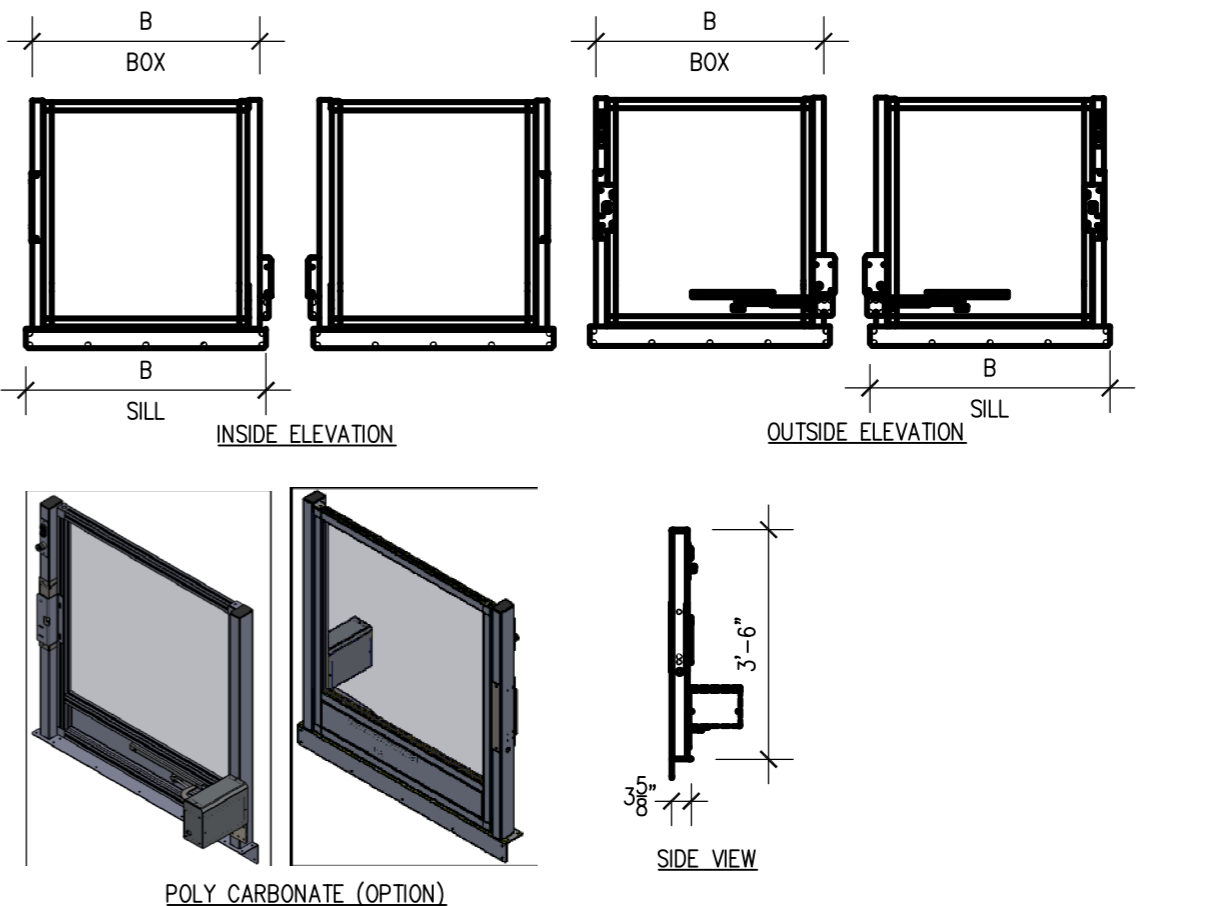


A	B
32"	40 1/2"
34"	42 1/2"
36"	44 1/2"
38"	46 1/2"
40"	48 1/2"
42"	50 1/2"

06 AUTOMATIC OPENER LANDING GATE
SCALE: 1" = 1'-0"



07 REACTION ON CONCRETE SLAB
SCALE: 1/2" = 1'-0"



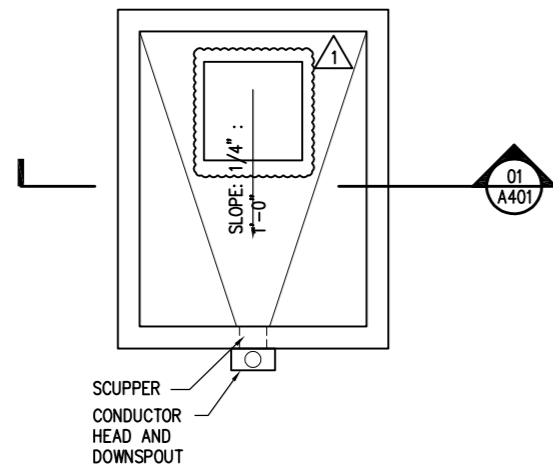
08 LANDING GATE DETAILS
SCALE: 1/2" = 1'-0"

ADL DECK LIFT TECHNICAL DATA	
TYPE	OUTDOOR USE, VERTICAL LIFT, OPEN SHAFT
CODE	CSA/B613
MAX CAPACITY	ONE PERSON A WHEELCHAIR OR ONE PERSON A WHEELCHAIR AND ONE HELPER
MAX LOAD	750 Lb(340 Kg)
RAIL LINEAR WEIGHT	5 Lb/ft
TRACTION MACHINE	ACME SCREW AND NUT
VOLTAGE	DC, 24 VOLT
SPEED	9 pi/min(0.05m/s) *OPTION MAX SPEED: 14pi/min(0.07m/s)
MAX TRAVEL	98po (2500 mm) max.
EMERGENCY BRAKES	BRONZE SAFETY NUT
CAB FINISH	SEE DOCUMENT C-01
PLATFORM	MAX FLOOR DIMENSIONS 40x66po (1018mm x1679mm)
FLOOR FINISH	ANTI-SKID FLOOR SURFACE
CONTROL BUTTONS	WEATHERPROOF CONTROL BUTTONS
CONTROLLER	ANTI-SKID FLOOR SURFACE
DOOR INTERLOCK	HONEYWELL (REALIGN) or GAL (TYPE N)

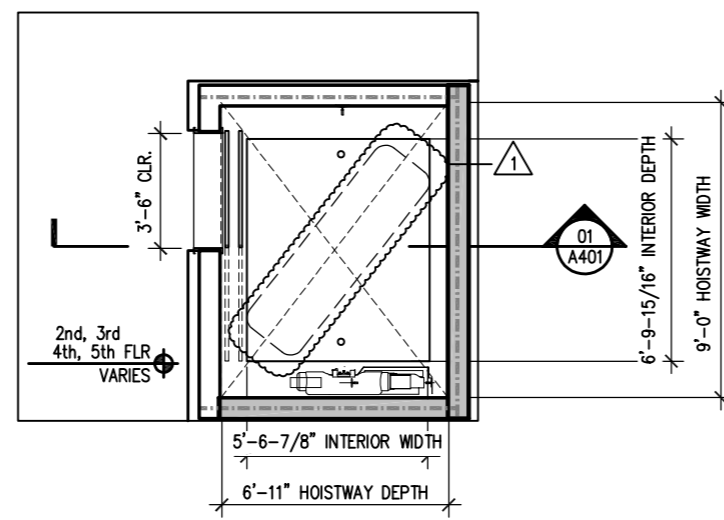
NOTE: -

- THIS ELECTRONIC DOCUMENT IS NOT SIGNED OR SEALED BY AN ENGINEER AND MAY NOT BE USED FOR CONSTRUCTION PURPOSES.
- THIS ELECTRONIC DOCUMENT IS STRICTLY FOR INFORMATION PURPOSES (OR COORDINATION, AS APPLICABLE).
- NO GUARANTEES ARE GIVEN ON THE INTEGRITY OF THE TRANSMITTED INFORMATION.
- NO GUARANTEES ARE GIVEN ABOUT PAST OR FUTURE CHANGES TO THIS DOCUMENT

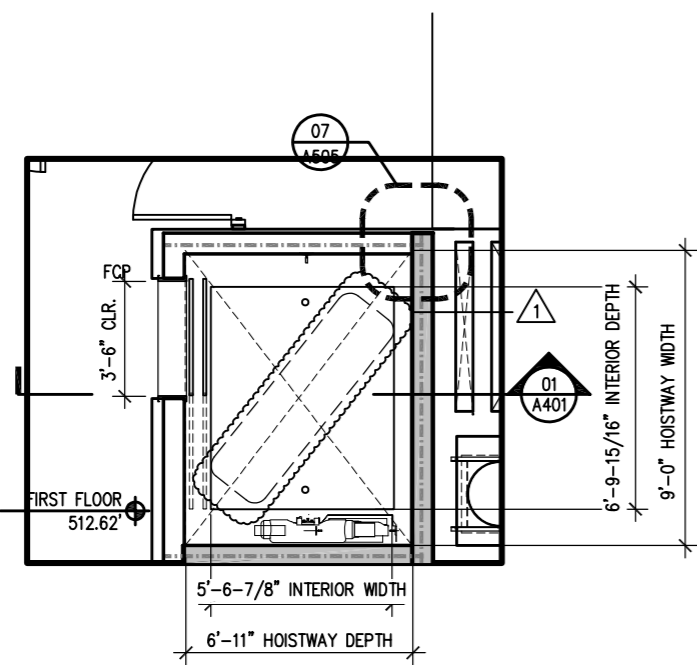
CHAIR LIFT DETAILS



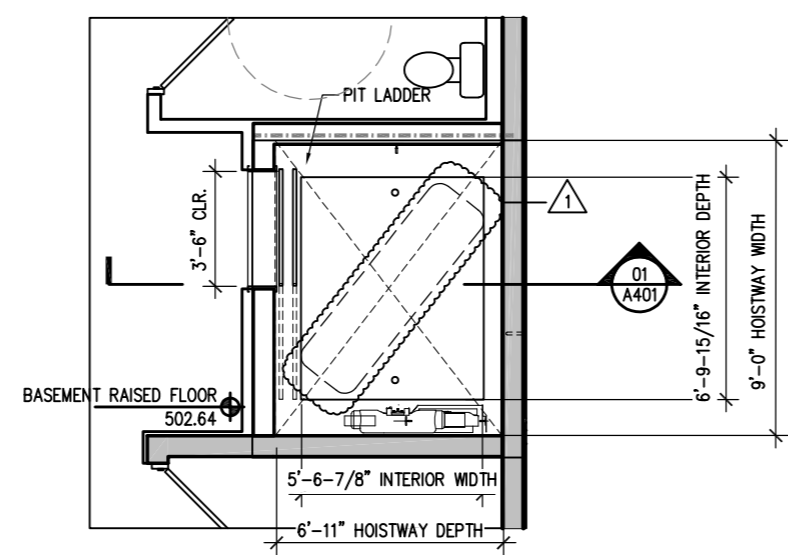
05 ELEVATOR ROOF PLAN
A401 SCALE: 1/4" = 1'-0"



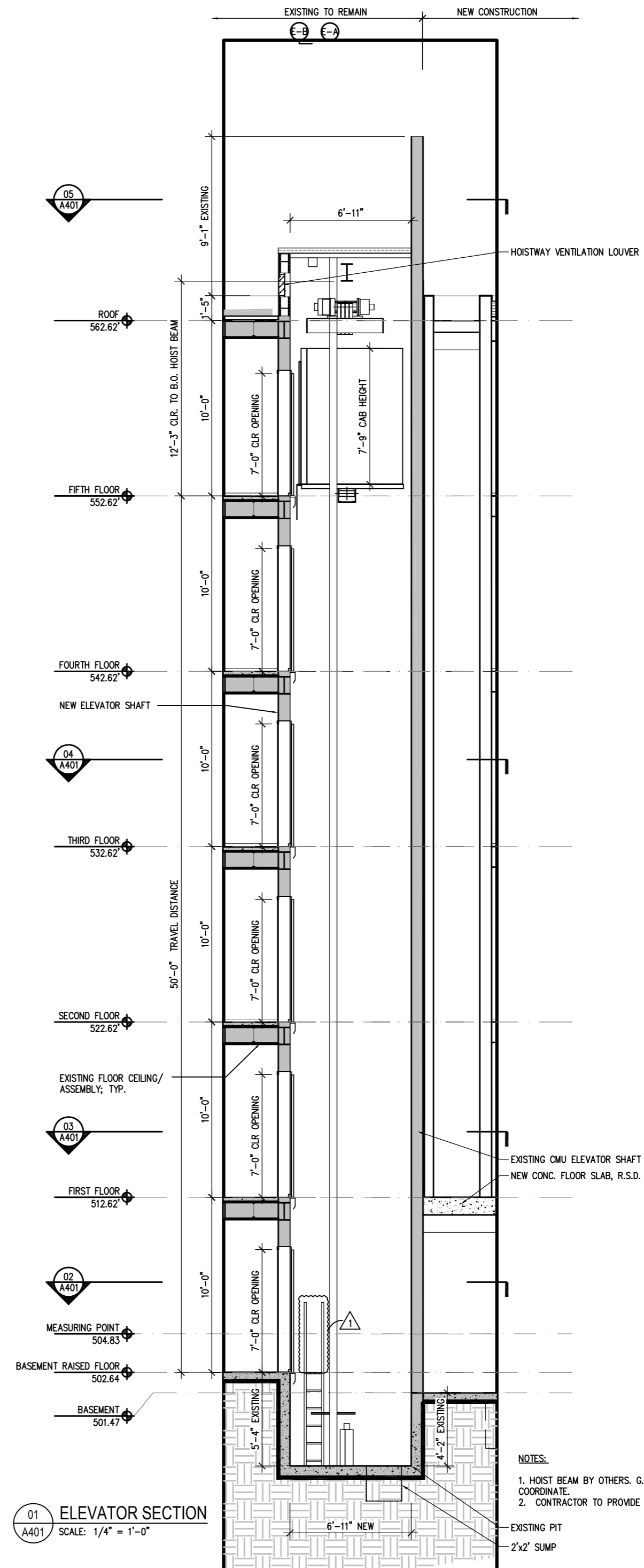
04 ELEVATOR TYP. FLOOR PLAN (2ND-5TH FLR)
A401 SCALE: 1/4" = 1'-0"



03 ELEVATOR FIRST FLOOR PLAN
A401 SCALE: 1/4" = 1'-0"



02 ELEVATOR GARAGE PLAN
A401 SCALE: 1/4" = 1'-0"



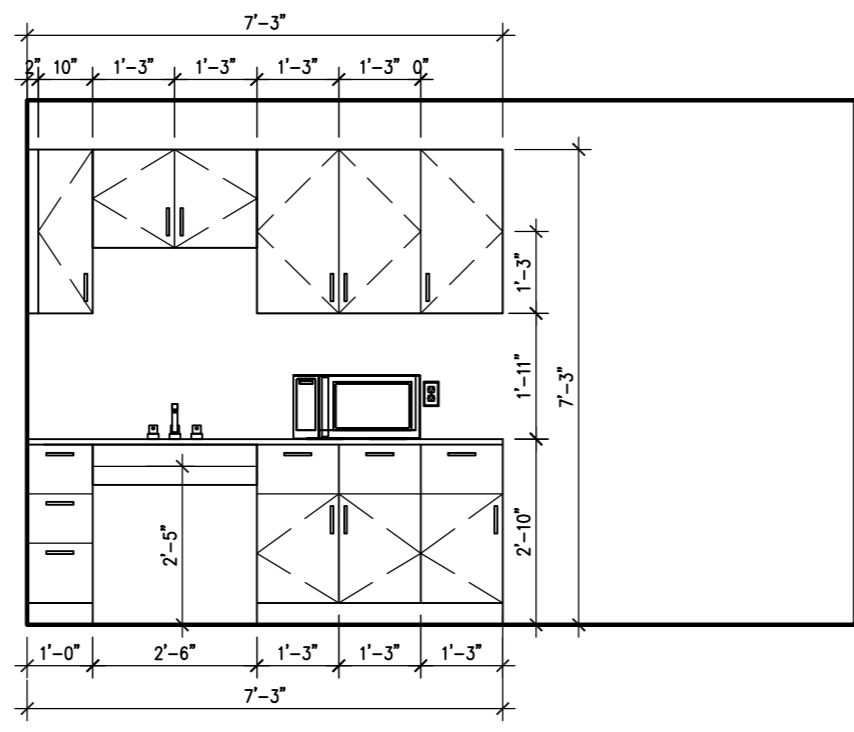
01 ELEVATOR SECTION
A401 SCALE: 1/4" = 1'-0"

GENERAL NOTES:

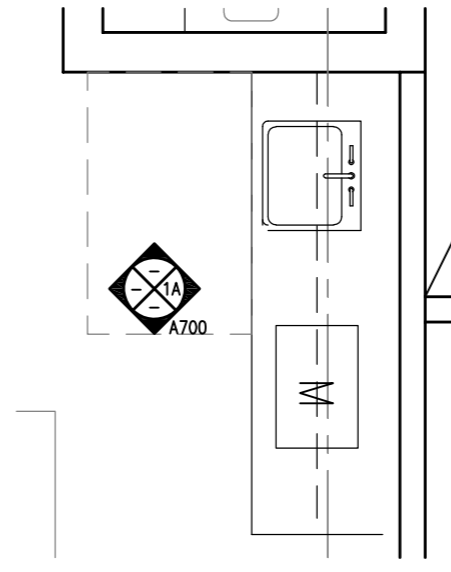
1. INSTALLATION SHALL CONFORM TO ASME/ANSI A17.1-2010.
2. INSTALLATION SHALL CONFORM TO ICC A117.1-2009.
3. INSTALLATION SHALL CONFORM TO D.C CONSTRUCTION CODES-2013.
4. INSTALLATION SHALL CONFORM TO NATIONAL ELECTRICAL CODE, NEC-2011, AS AMENDED BY 12C DCMR.
5. ELEVATOR SYSTEM SHOP DRAWINGS SHALL BE SUBMITTED TO THE DCRA ELEVATOR DIVISION FOR APPROVAL PRIOR TO INSTALLATION.

- NOTES:
1. HOIST BEAM BY OTHERS. G.C. TO COORDINATE.
 2. CONTRACTOR TO PROVIDE OTIS GEN-2

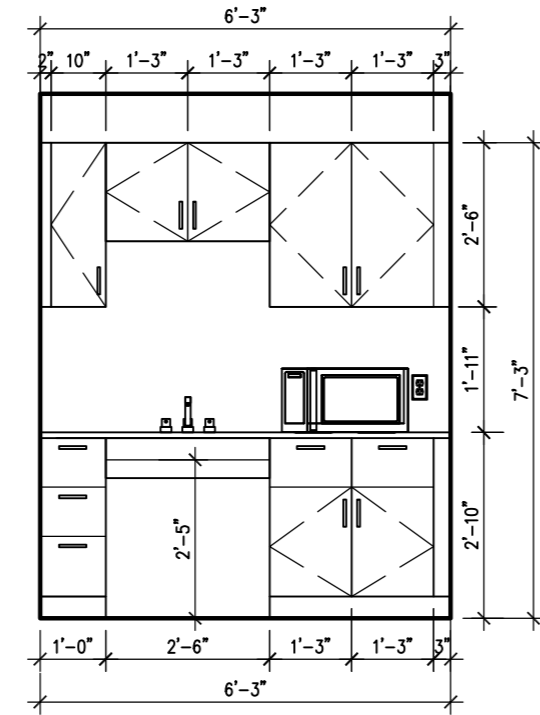
ELEVATOR SECTION



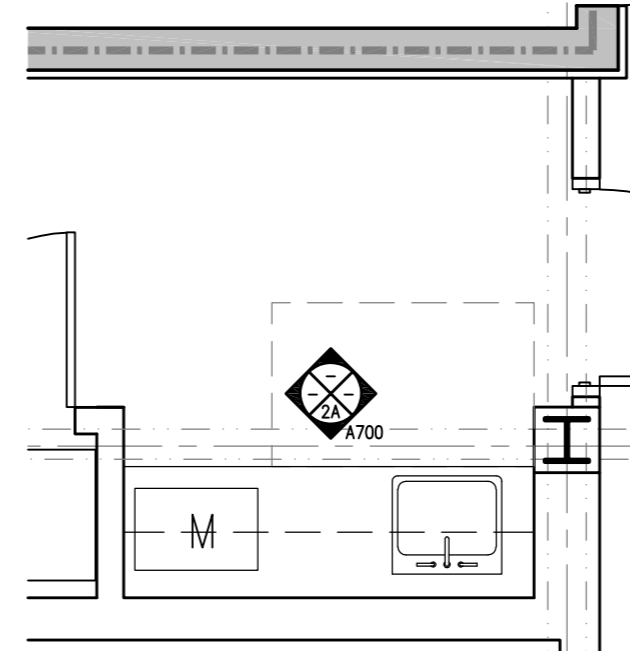
01A ENLARGED KITCHEN ELEVATION
A700 SCALE: 1/2" = 1'-0"



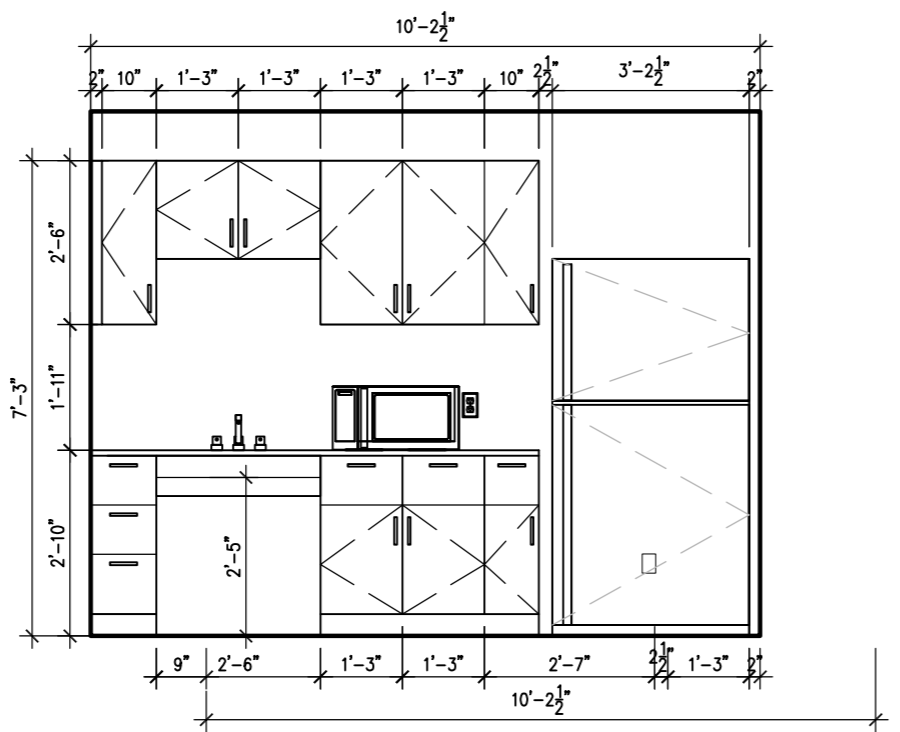
01 ENLARGED KITCHEN PLAN
A700 SCALE: 1/2" = 1'-0"



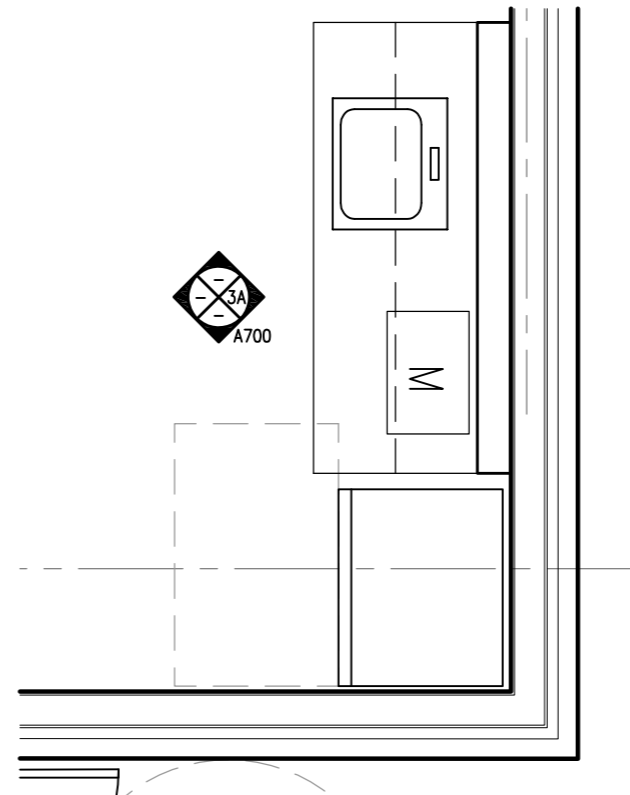
01A ENLARGED KITCHEN ELEVATION
A700 SCALE: 1/2" = 1'-0"



01 ENLARGED KITCHEN PLAN
A700 SCALE: 1/2" = 1'-0"



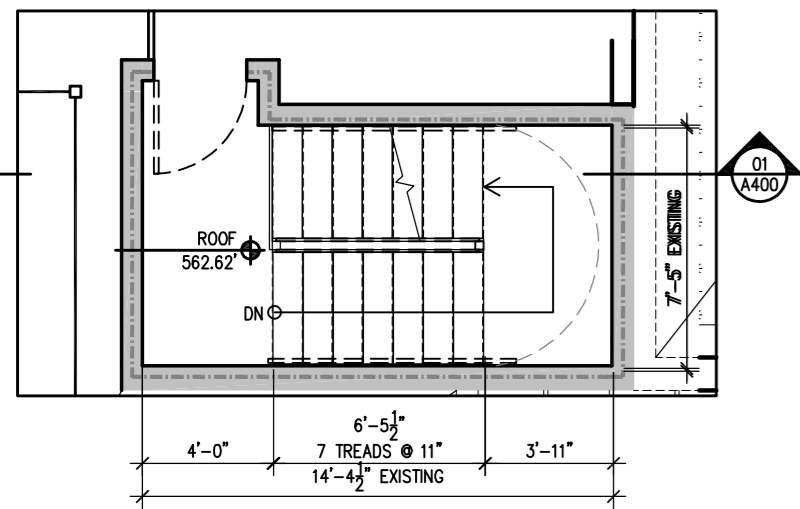
01A ENLARGED KITCHEN ELEVATION
A700 SCALE: 1/2" = 1'-0"



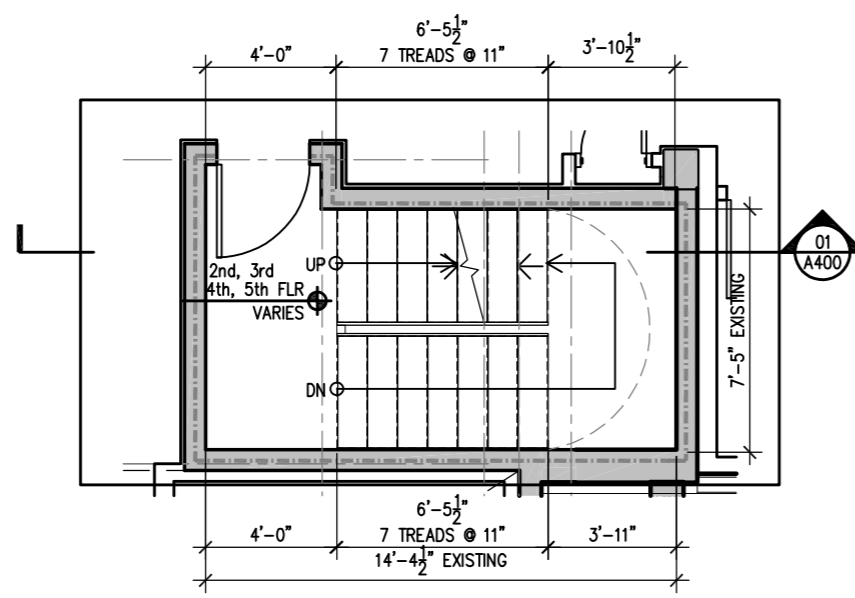
01 ENLARGED KITCHEN PLAN
A700 SCALE: 1/2" = 1'-0"

- PLAN KEYNOTES:**
- 1 REFRIGERATOR - TO FIT IN A 36" CLR SPACE
 - 2 SINK TO FIT A 30" CABINET
 - 3 SINK FAUCET
 - 4 30 x 48 MIN. CLEAR FLOOR SPACE IN FRONT OF APPLIANCE/FIXTURE FRONT APPROACH
 - 5 5'-0" CLEAR TURNING RADIUS
 - 6 MIN. 30" WIDE, 34" TALL ACCESSIBLE SURFACE & SINK, NO BASE CABINET.
 - 7 COUNTERTOP
 - 8 STAINLESS STEEL OUTLET, 42" A.F.F.

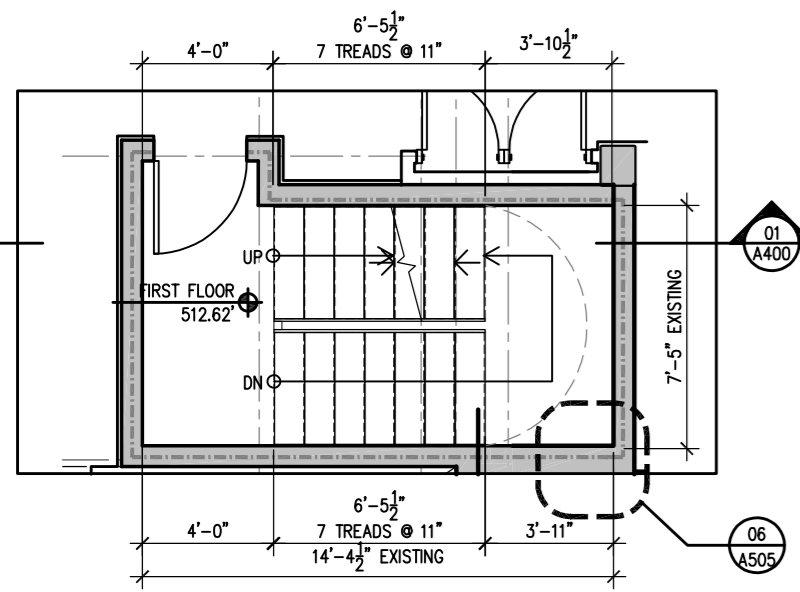
ENLARGED KITCHEN PLANS & ELEVATIONS



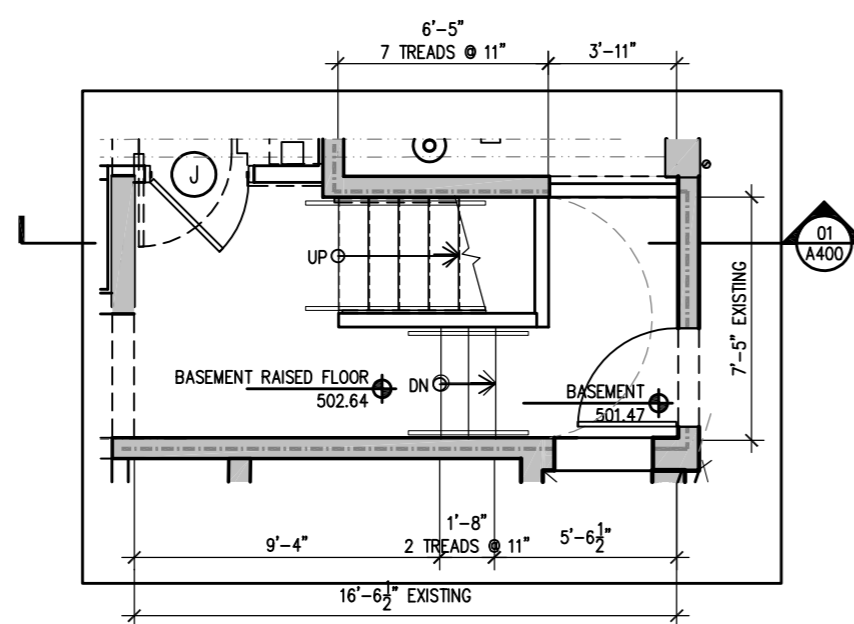
05 EXISTING STAIR ROOF PLAN
A400 SCALE: 1/4" = 1'-0"



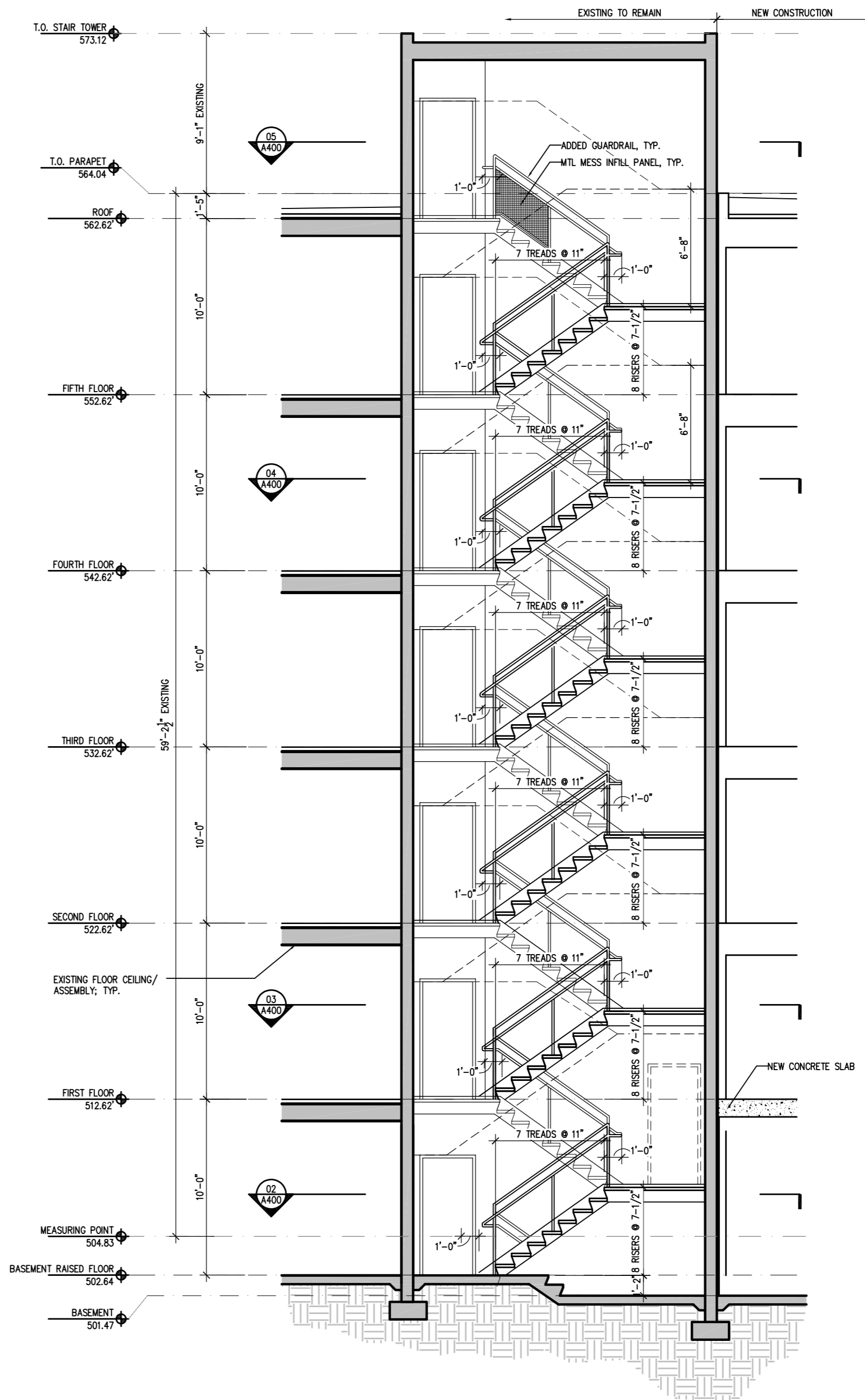
04 EXISTING STAIR TYP. FLOOR PLAN (2ND-5TH FLR)
A400 SCALE: 1/4" = 1'-0"



03 EXISTING STAIR FIRST FLOOR PLAN
A400 SCALE: 1/4" = 1'-0"

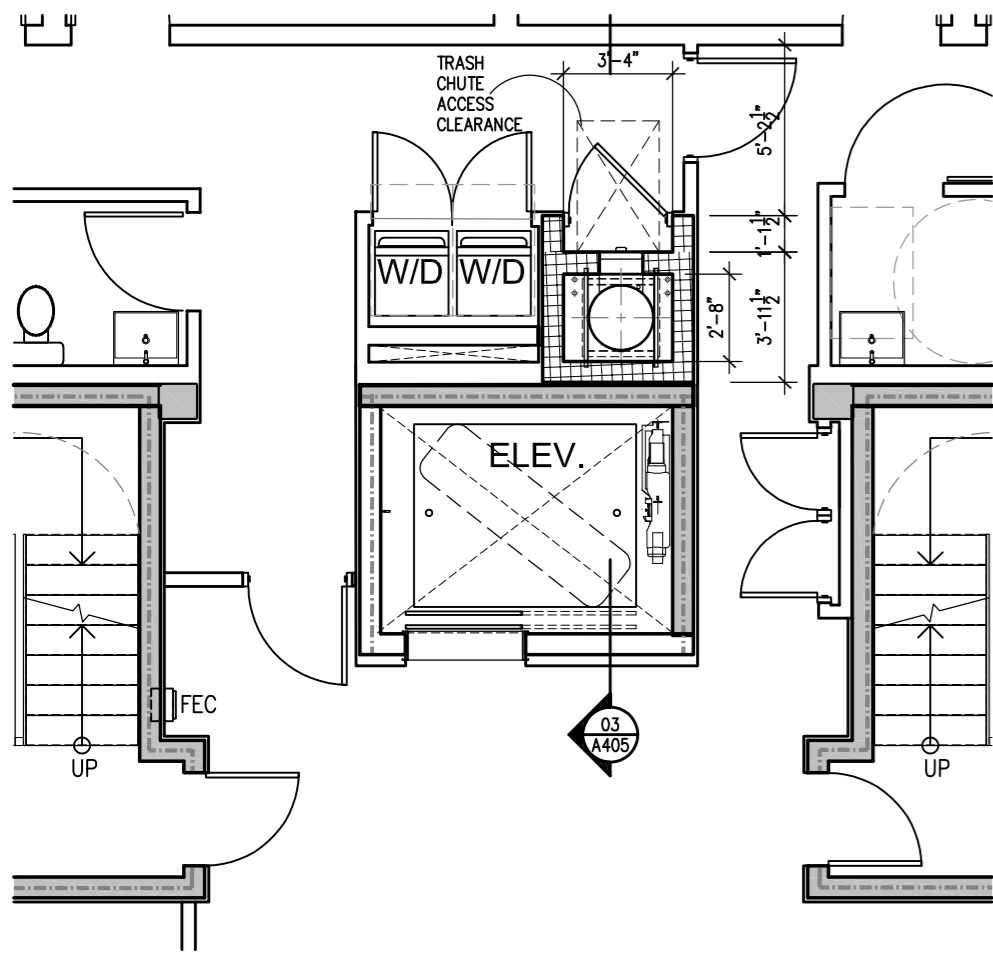


02 EXISTING STAIR GARAGE PLAN
A400 SCALE: 1/4" = 1'-0"

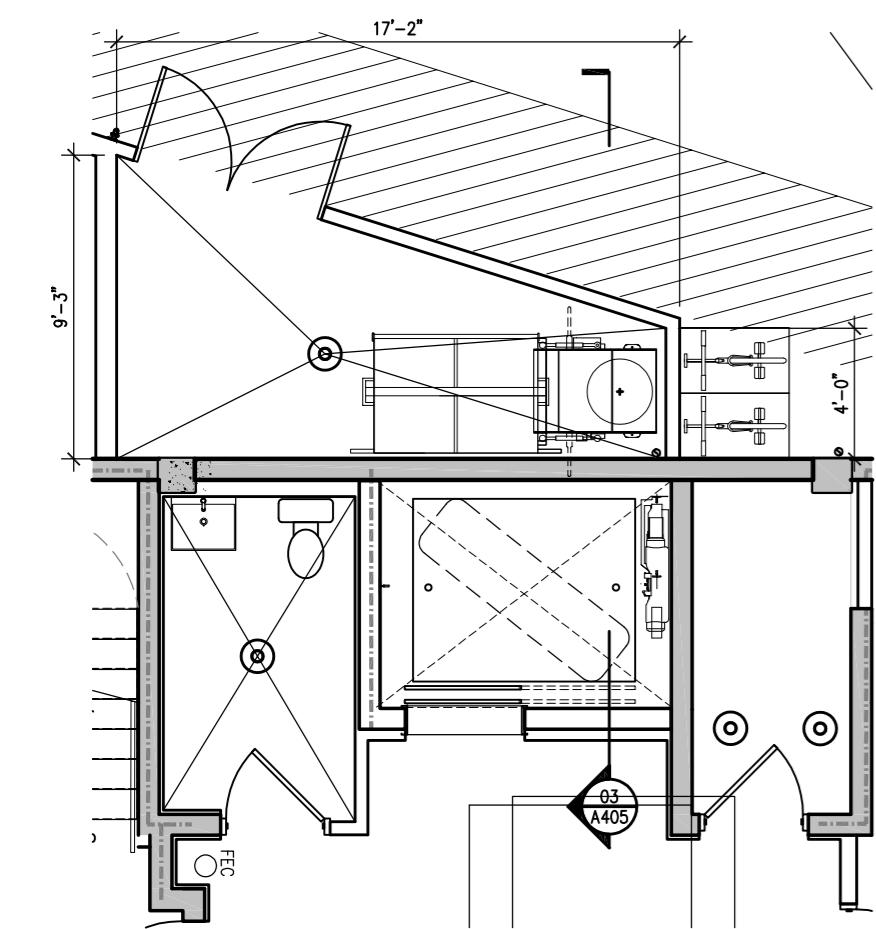


01 EXISTING STAIR SECTION
A400 SCALE: 1/4" = 1'-0"

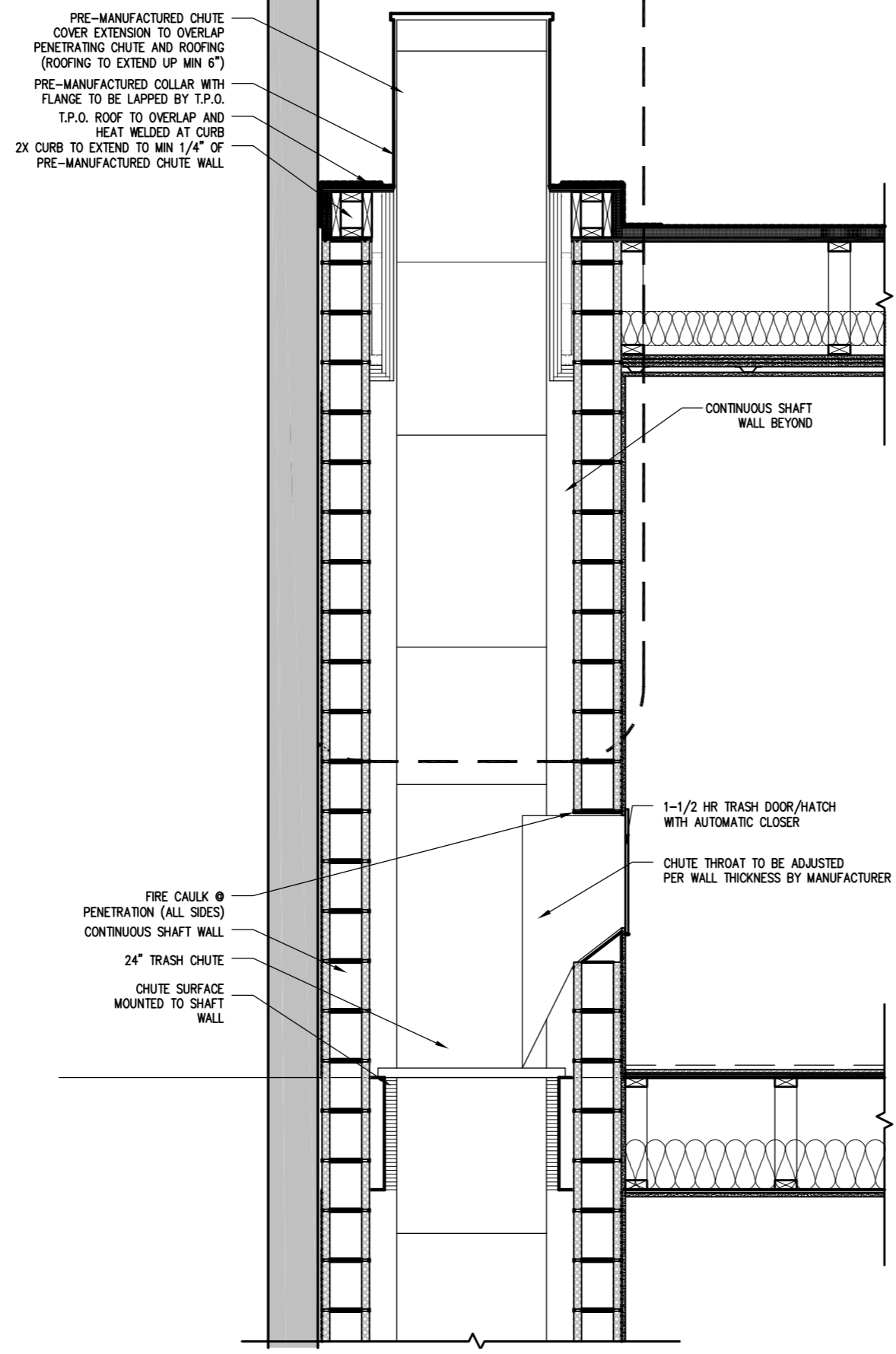
EXISTING STAIR SECTION



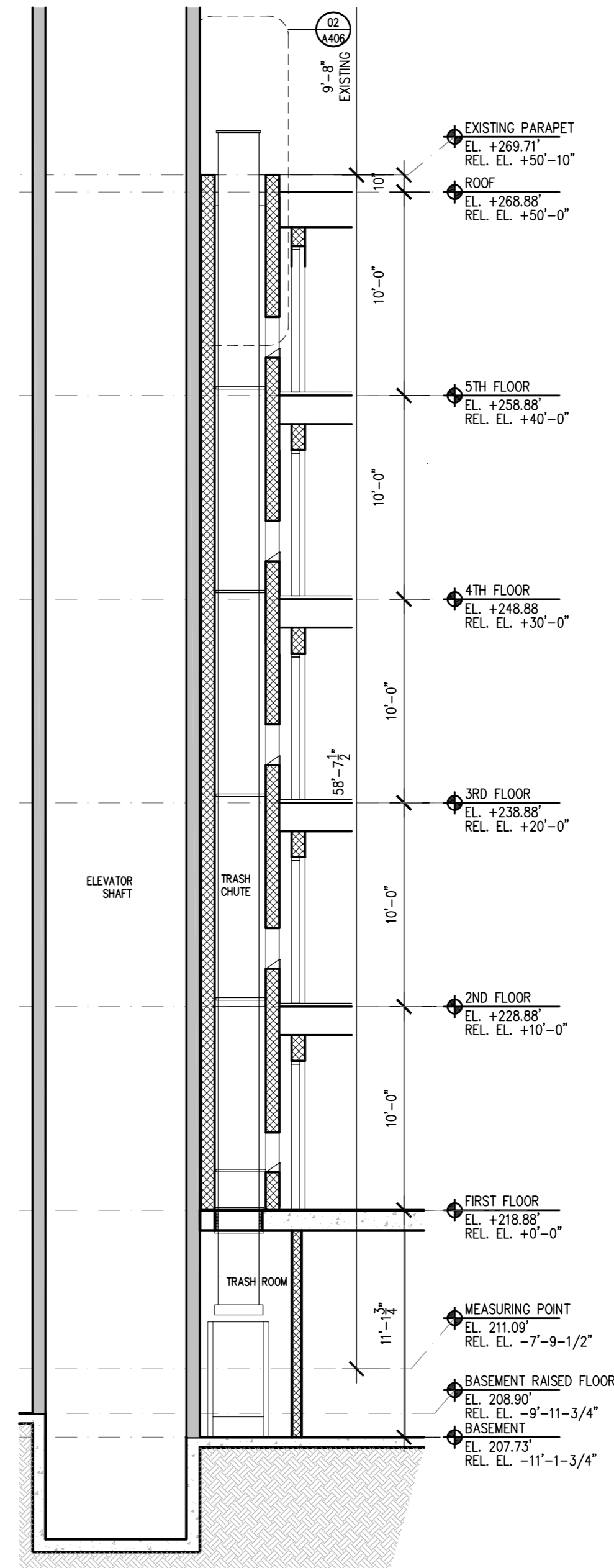
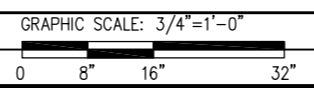
02 TYPICAL TRASH CHUTE PLAN
SCALE: 1/4" = 1'-0"



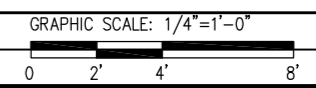
02 BASEMENT TRASH CHUTE PLAN
SCALE: 1/4" = 1'-0"



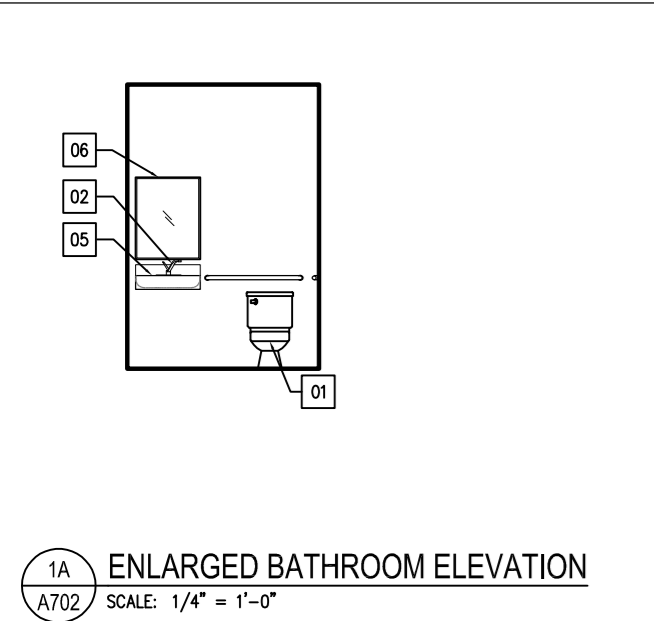
03 TRASH CHUTE SECTION DETAIL
SCALE: 1/4" = 1'-0"



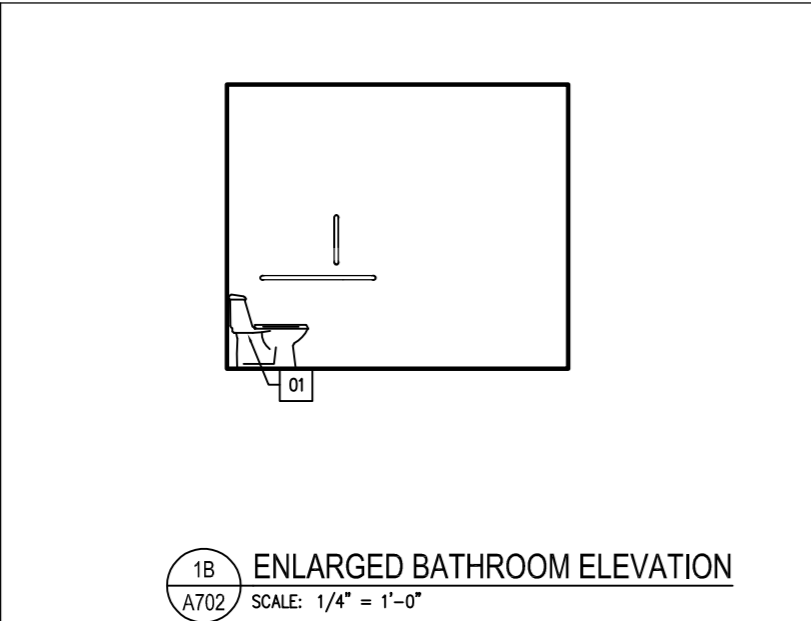
04 TRASH CHUTE SECTION
SCALE: 1/4" = 1'-0"



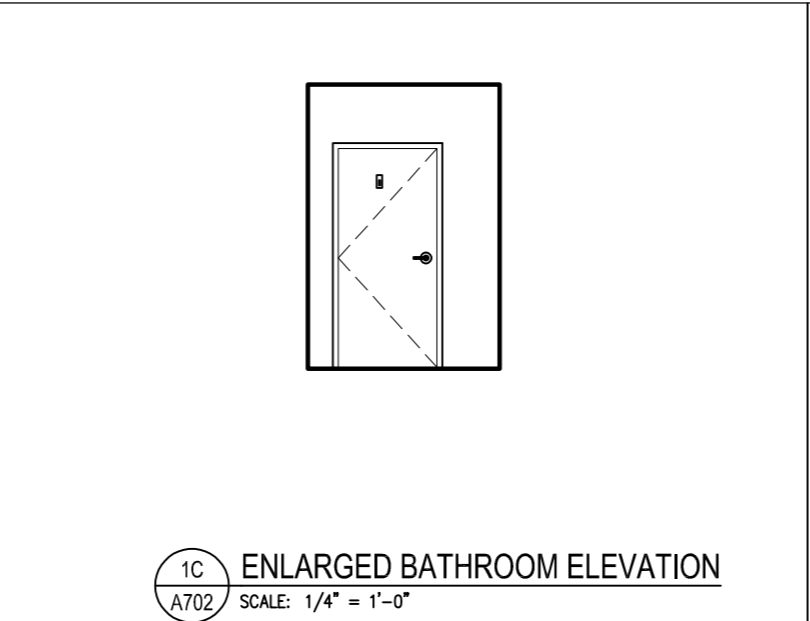
TRASH CHUTE SECTION & DETAIL



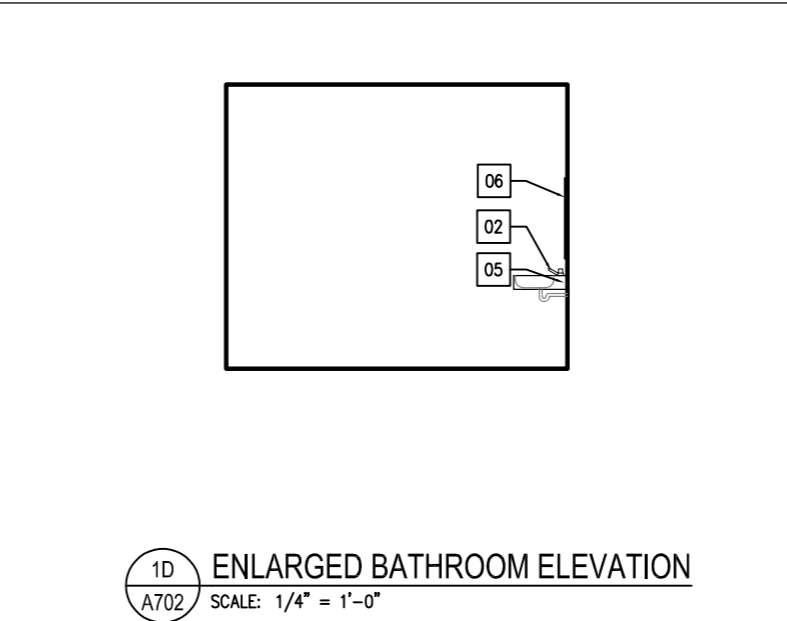
1A ENLARGED BATHROOM ELEVATION
A702 SCALE: 1/4" = 1'-0"



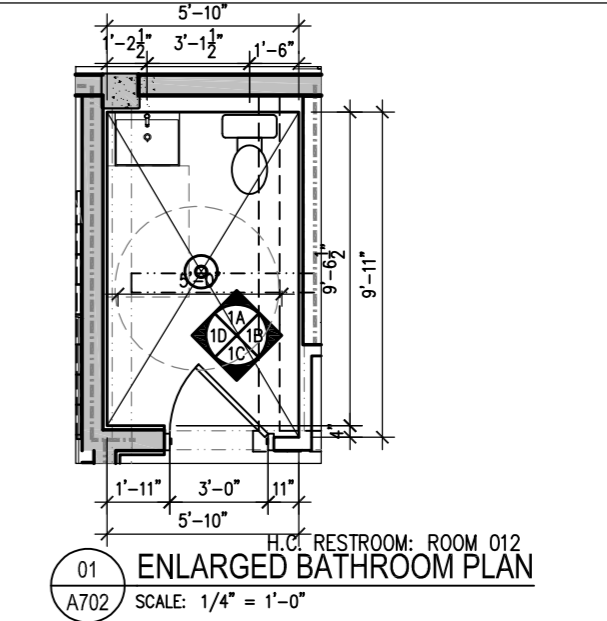
1B ENLARGED BATHROOM ELEVATION
A702 SCALE: 1/4" = 1'-0"



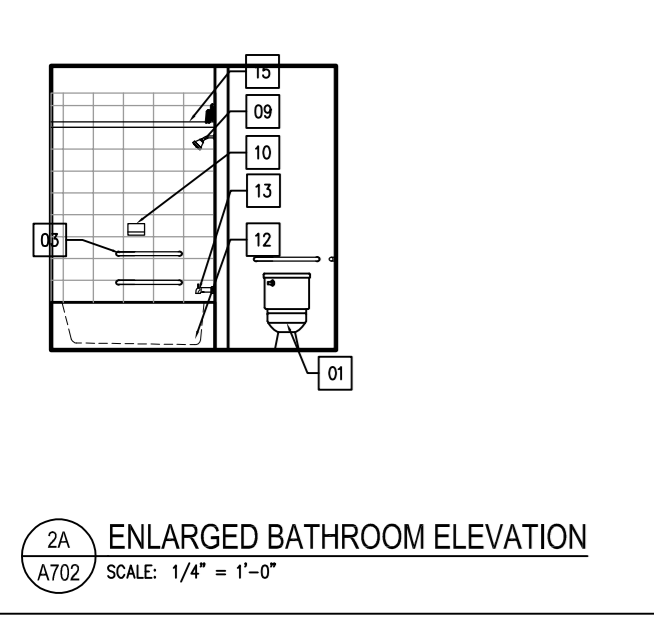
1C ENLARGED BATHROOM ELEVATION
A702 SCALE: 1/4" = 1'-0"



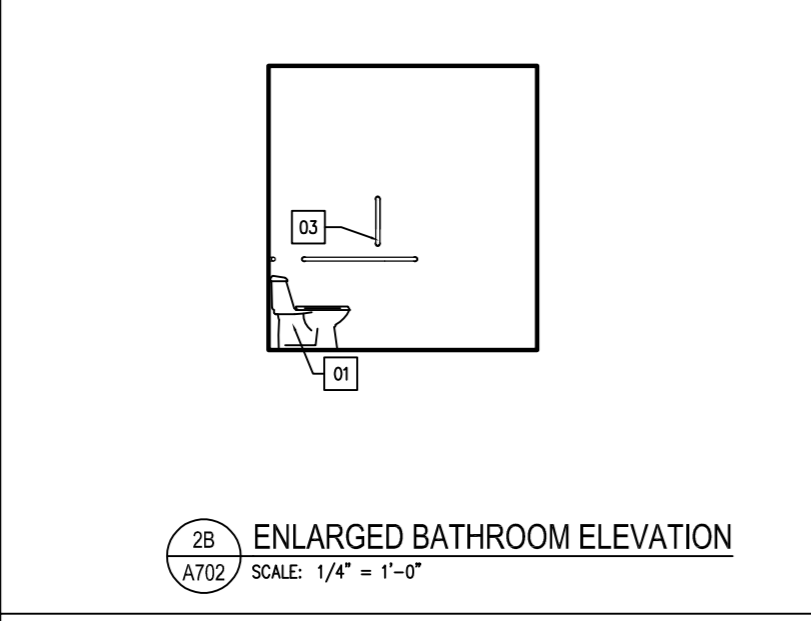
1D ENLARGED BATHROOM ELEVATION
A702 SCALE: 1/4" = 1'-0"



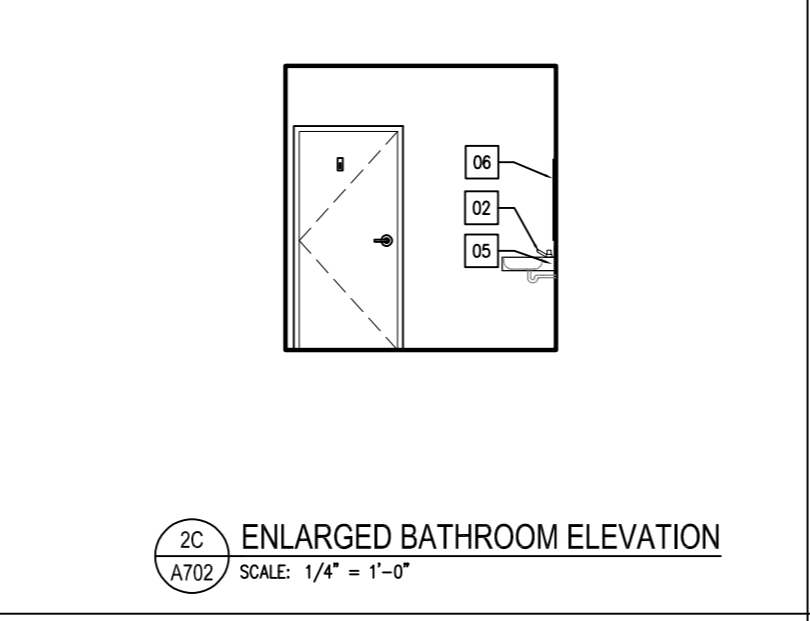
01 ENLARGED BATHROOM PLAN
A702 SCALE: 1/4" = 1'-0"



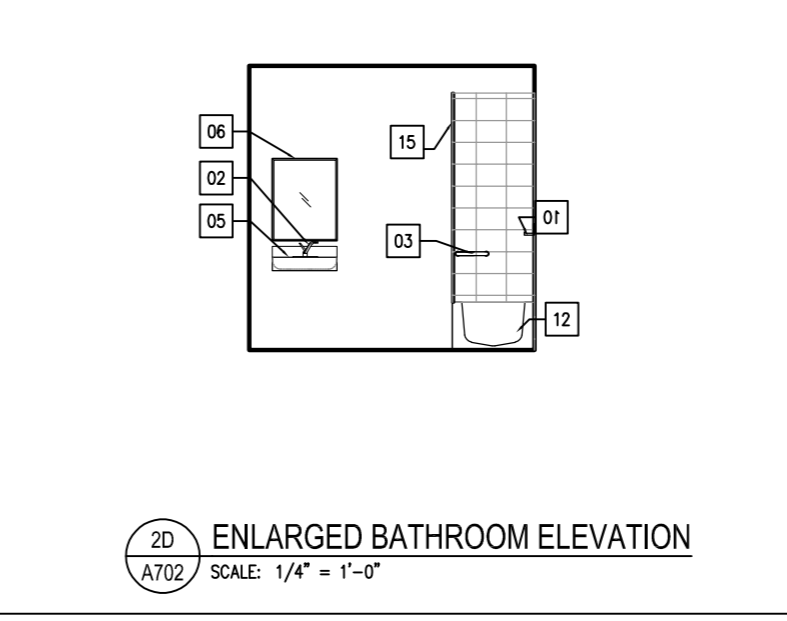
2A ENLARGED BATHROOM ELEVATION
A702 SCALE: 1/4" = 1'-0"



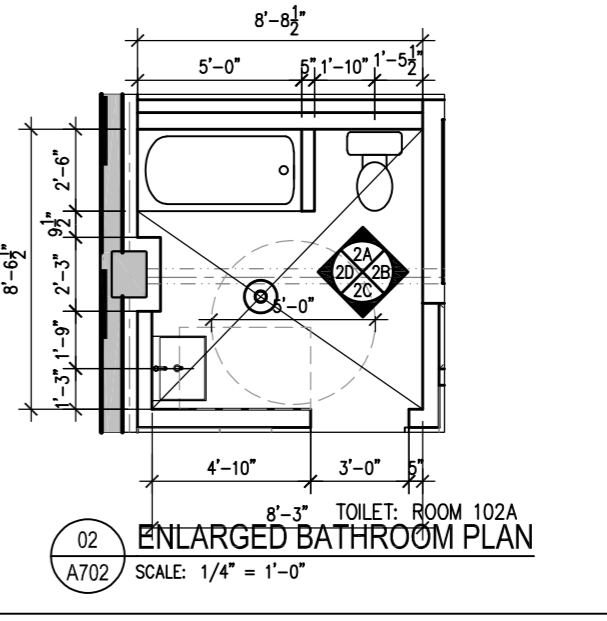
2B ENLARGED BATHROOM ELEVATION
A702 SCALE: 1/4" = 1'-0"



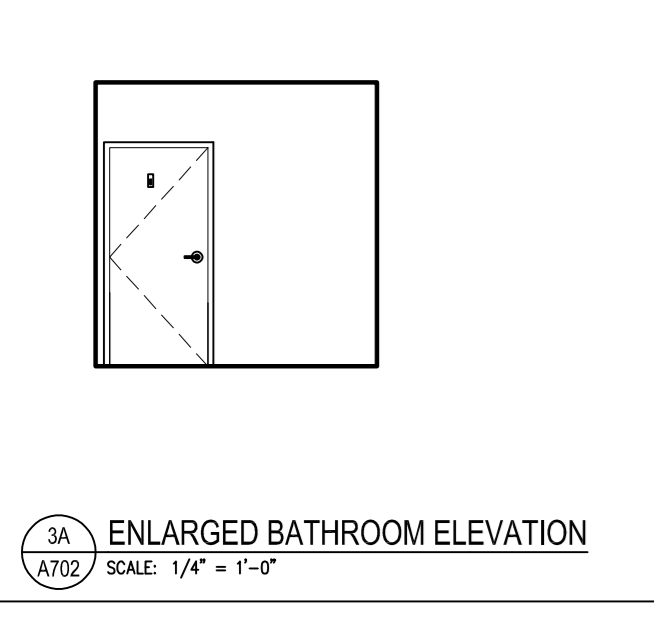
2C ENLARGED BATHROOM ELEVATION
A702 SCALE: 1/4" = 1'-0"



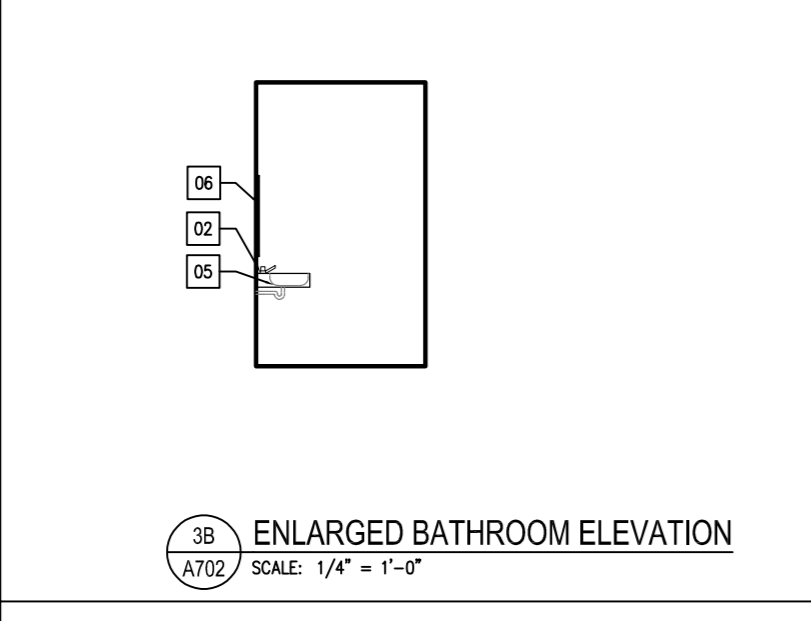
2D ENLARGED BATHROOM ELEVATION
A702 SCALE: 1/4" = 1'-0"



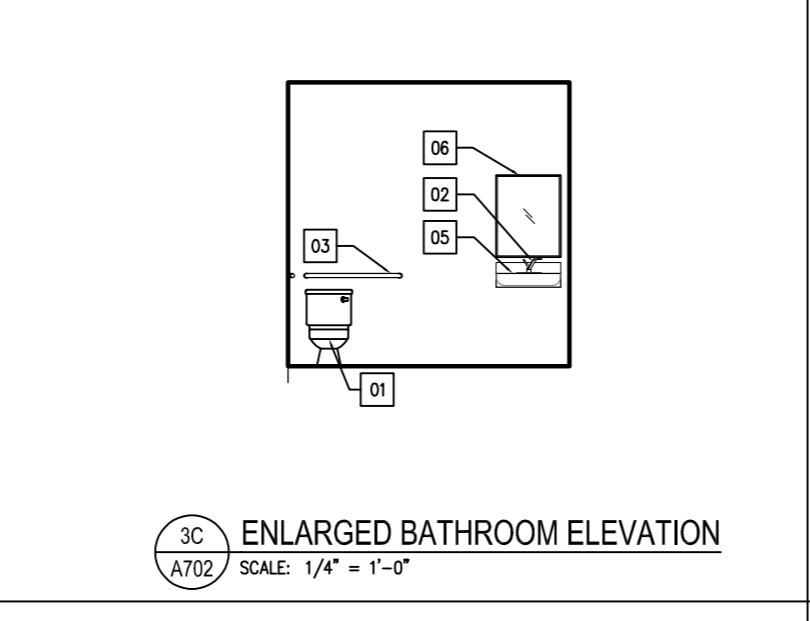
02 ENLARGED BATHROOM PLAN
A702 SCALE: 1/4" = 1'-0"



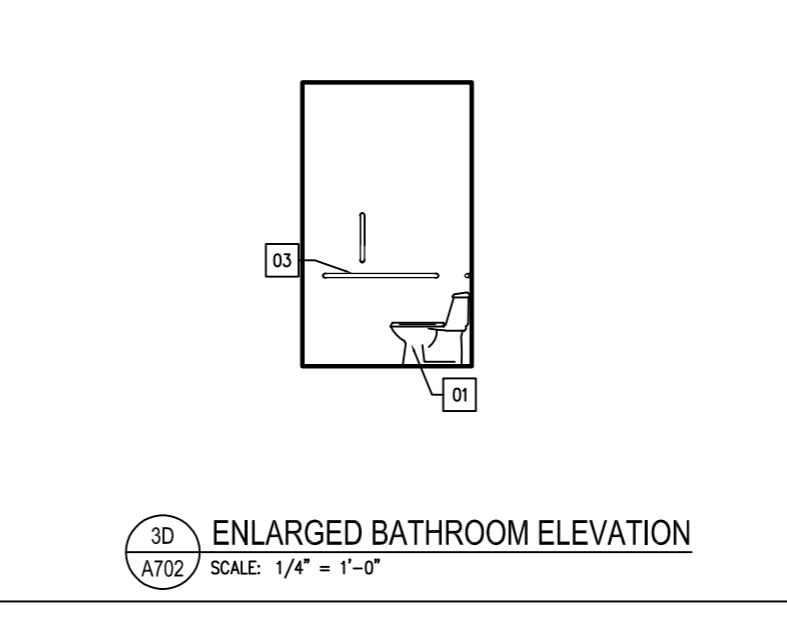
3A ENLARGED BATHROOM ELEVATION
A702 SCALE: 1/4" = 1'-0"



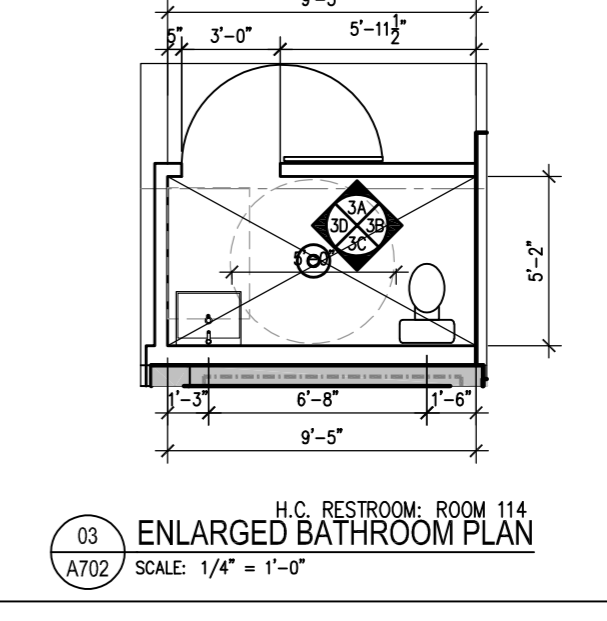
3B ENLARGED BATHROOM ELEVATION
A702 SCALE: 1/4" = 1'-0"



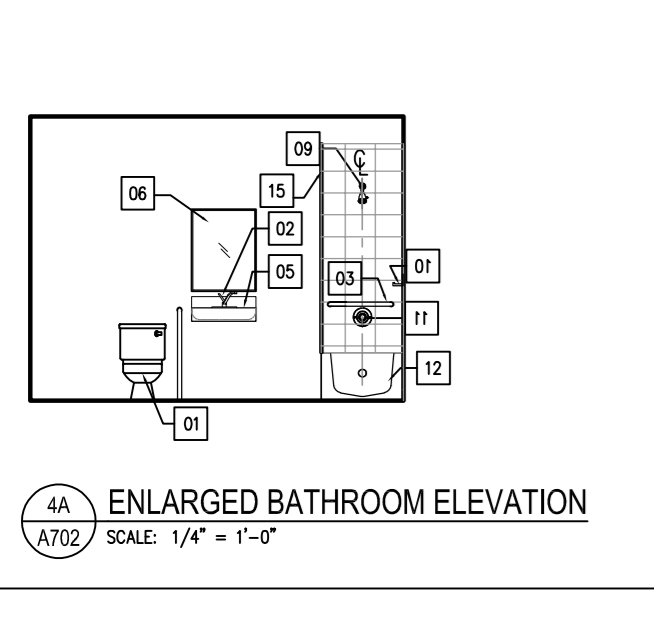
3C ENLARGED BATHROOM ELEVATION
A702 SCALE: 1/4" = 1'-0"



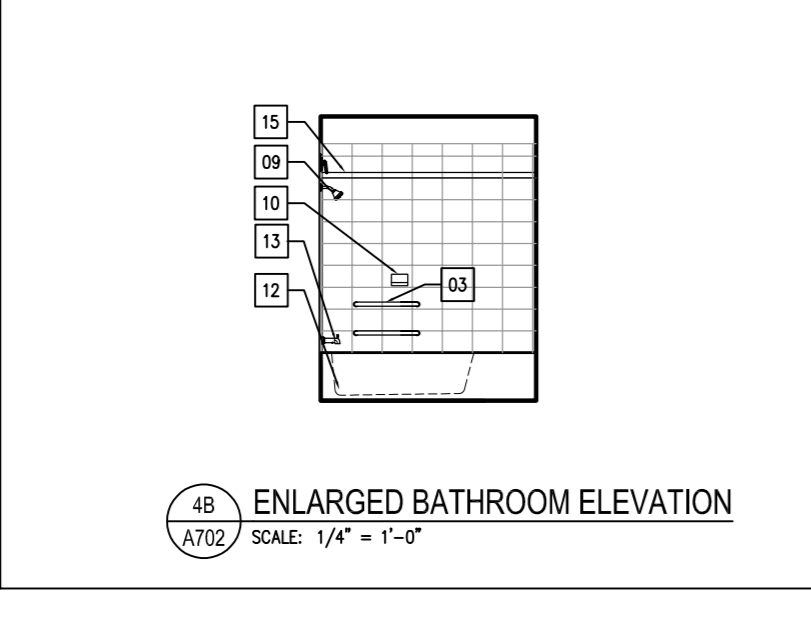
3D ENLARGED BATHROOM ELEVATION
A702 SCALE: 1/4" = 1'-0"



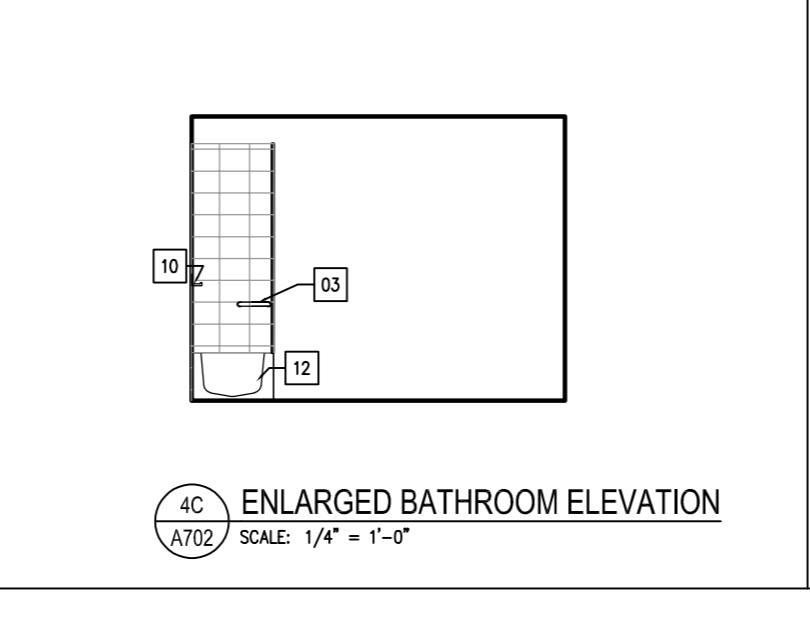
03 ENLARGED BATHROOM PLAN
A702 SCALE: 1/4" = 1'-0"



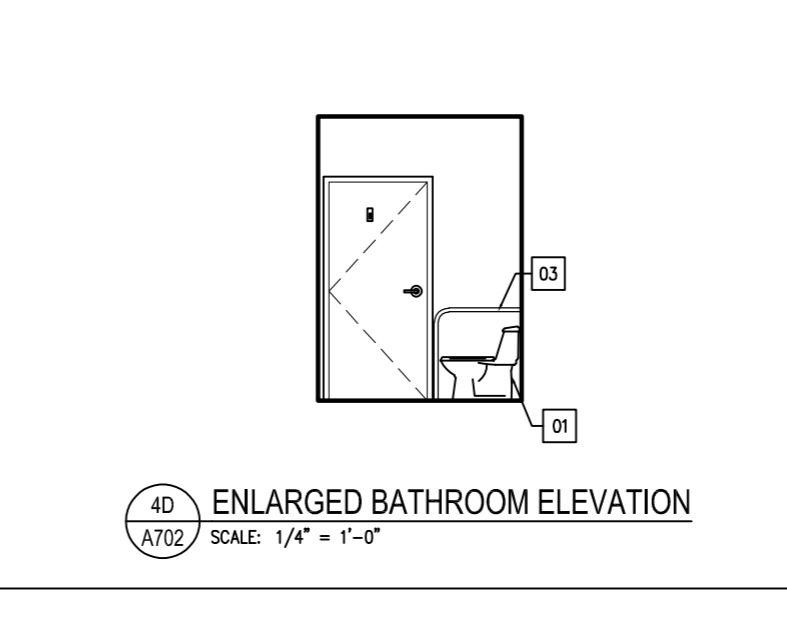
4A ENLARGED BATHROOM ELEVATION
A702 SCALE: 1/4" = 1'-0"



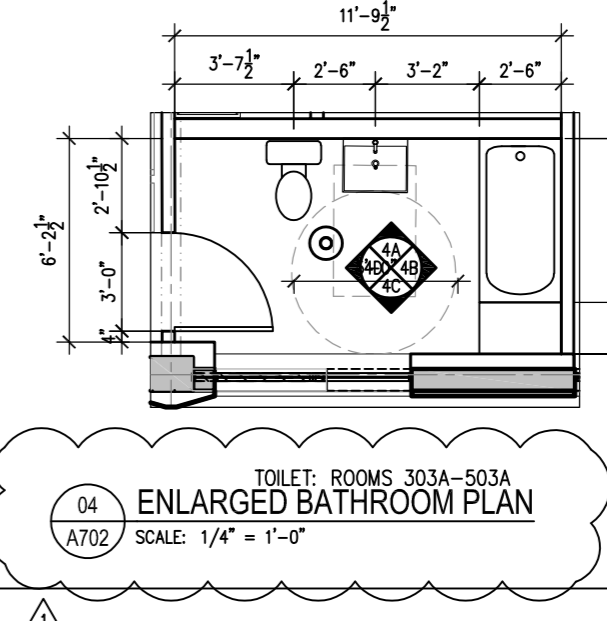
4B ENLARGED BATHROOM ELEVATION
A702 SCALE: 1/4" = 1'-0"



4C ENLARGED BATHROOM ELEVATION
A702 SCALE: 1/4" = 1'-0"



4D ENLARGED BATHROOM ELEVATION
A702 SCALE: 1/4" = 1'-0"



04 ENLARGED BATHROOM PLAN
A702 SCALE: 1/4" = 1'-0"

GENERAL NOTES:

- SEE SHEET A704 AND INTERIOR SPECIFICATION SHEETS FOR SCHEDULES AND SPECIFICATIONS.
- SEE SHEET SERIES A150 FOR REFLECTED CEILING PLANS.
- DIMENSIONS ARE PROVIDED FROM FACE OF FINISH OF EXTERIOR/INTERIOR WALL.
- DOORS AT CORNERS TO BE FRAMED 4" FROM INSIDE CORNER TYP. OTHER DOORS TO BE CENTERED IN SPACES UNLESS NOTED OTHERWISE.
- ALL SHOWER DOORS ARE REMOVABLE.
- IN TYPE B UNITS, PROVIDE REINFORCING IN WALLS BEHIND AND AROUND TUBS, SHOWERS AND TOILETS FOR FUTURE INSTALLATION OF GRAB BARS.
- IN TYPE B UNITS, PROVIDE REINFORCING IN WALL BEHIND TOILET SO THAT A SWING-UP GRAB BAR CAN BE INSTALLED WITH ITS CENTER 15-3/4" FROM THE CENTER LINE OF THE TOILET, ON THE SIDE WITH THE 1'-6" INDICATED CLEARANCE.
- UNO, ALL VANITIES TO BE 21" DEEP.

PLAN KEYNOTES:

- UNO, COUNTERTOP TO OVERHANG CABINETS 1" IN FRONT, AND 3/4" ON SIDES.
- HEIGHT OF VANITY INDICATED INCLUDES HEIGHT OF COUNTERTOP.
- FLOOR FINISH TO EXTEND UNDER REMOVABLE CABINETS IN TYPE B UNITS.
- PROVIDE A 4" BACKSLASH TO MATCH COUNTERTOP AT WALL BEHIND VANITY.
- PROVIDE PROTECTION AND/OR INSULATION ON EXPOSED PIPES. THERE SHALL BE NO SHARP OR ABRASIVE SURFACES UNDER SINKS.
- ALL SHOWERS AND TUBS TO HAVE SOAP DISHES.

- PLAN KEYNOTES:**
- | | | |
|--------------------------|-----------------------|----------------------------------|
| 1 TOILET | 6 MIRROR | 12 TUB |
| 2 SINK FAUCET | 7 TOWEL BAR | 13 TUB FAUCET |
| 3 GRAB BAR | 8 TOILET PAPER HOLDER | 14 BLOCKING FOR FUTURE GRAB BARS |
| 4 27" WASHER/DRIER STACK | 9 SHOWER FAUCET | 15 SHOWER PARTITION |
| 5 SINK | 10 SOAP DISH | |
| | 11 SHOWER CONTROLS | |

GRAPHIC KEY:

ENLARGED BATHROOM PLANS & ELEVATIONS